

Edition:
09/2024

Product data sheets 2024

T&D Pharma GmbH



Laxative/Gastro

Bisacodyl AIWA® 5 mg	<i>sugar-coated tablets</i>
Lactulose AIWA® 670 mg/ml 200/500/1000 ml	<i>solution</i>
Lactulose AIWA® 10g/15 ml plum flavour	<i>solution</i>
Panto AIWA® 20 mg	<i>gastro-resistant tablets</i>
Panto AIWA® 40 mg	<i>gastro-resistant tablets</i>

Minerals / Vitamins / Trace elements

Ferro AIWA® 100 mg	<i>film-coated tablets</i>
--------------------	----------------------------

Food supplements

B-FIT® with B12	<i>drinking ampoules</i>
Centrovit AIWA®	<i>coated tablets</i>
Centrovit AIWA®	<i>effervescent tablets</i>
Cranberry AIWA®	<i>soft capsules</i>
D-Day® long	<i>soft capsules</i>
GEM OMEGA 3®	<i>soft gelatin capsules</i>
German Active for work	<i>effervescent tablets</i>
German Apple cure	<i>effervescent tablets</i>
German Calcium	<i>effervescent tablets</i>
German Calcium + D3	<i>effervescent tablets</i>
German Calcium + Vitamin C	<i>effervescent tablets</i>

German Iron	<i>effervescent tablets</i>
German Magnesium	<i>effervescent tablets</i>
German Multivitamin	<i>effervescent tablets</i>
German Multivitamin + Minerals	<i>effervescent tablets</i>
German Multivitamins for children	<i>effervescent tablets</i>
German Vitamin ACE	<i>effervescent tablets</i>
German Vitamin C	<i>effervescent tablets</i>
German Zinc	<i>effervescent tablets</i>
Gluco AIWA® plus	<i>effervescent tablets</i>
iC Direct®	<i>sachets with micro-pellets</i>
iFol®	<i>drinking ampoules</i>
Ferro AIWA® plus	<i>soft capsules</i>
Magnesium AIWA® 375 mg	<i>sachets with micro-pellets</i>
Neo AIWA®	<i>capsules</i>
Neo AIWA® plus Fe ⁺⁺	<i>capsules</i>
Osteo AIWA® forte + Vitamin D3	<i>effervescent tablets</i>
OXI-C® 1000 mg Immun plus	<i>effervescent tablets</i>
Q10 AIWA® plus	<i>soft capsules</i>
Vitamin B-Complex AIWA®	<i>capsules with prolonged release</i>
Vitamin C + Zinc AIWA®	<i>capsules with prolonged release</i>



Not available in every country

Please send inquiries to info@td-pharma.de

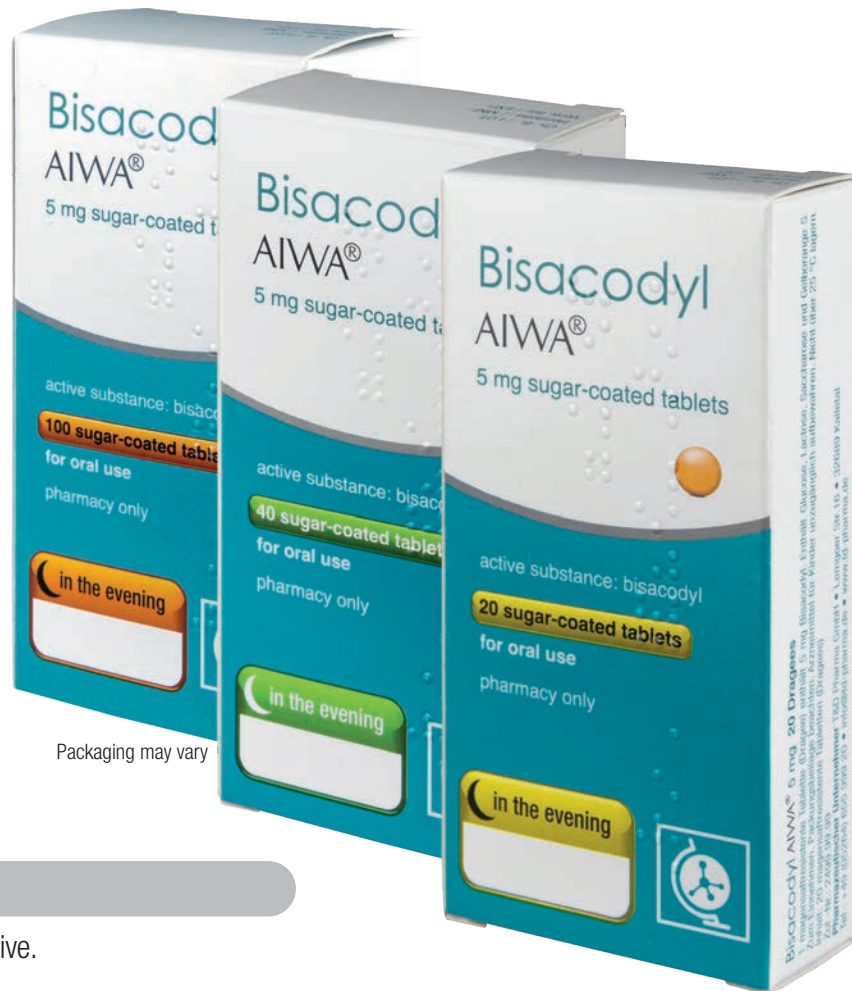
LAXATIVE/GASTRO

MINERALS/VITAMINS/
TRACE ELEMENTS

FOOD SUPPLEMENT

Bisacodyl AIWA® 5 mg

active substance: bisacodyl



Packaging may vary

Application

Bisacodyl AIWA® 5 mg is a laxative.

Duration of treatment

For adults and children over 10 years, it is recommended that 1 to 2 Bisacodyl AIWA® 5 mg coated tablets (equivalent to 5-10 mg bisacodyl) are taken once daily in the evening before bedtime. For children aged 2 to 10 years, it is recommended that 1 Bisacodyl AIWA® 5 mg coated tablet (equivalent to 5 mg bisacodyl) is taken once daily in the evening before bedtime. Swallow Bisacodyl AIWA® 5 mg whole with sufficient liquid (preferably a glass of water but not with milk). The onset of action should be immediate, i.e. after 6 to 10 hours.

Applications of Bisacodyl AIWA®

- It is used over short periods for constipation, as well as in disorders requiring bowel movements to be eased.



Method of administration

It is recommended that 1 to 2 Bisacodyl AIWA® 5 mg coated tablets are taken once daily in the evening before bedtime.

Contents of the pack

Yellow, coated oral tablets. Bisacodyl AIWA® 5 mg is available in packs of 20, 40 and 100 gastro-resistant tablets.

Pharmaceutical Company and Manufacturer

T&D Pharma GmbH
Lemgoer Straße 16 • 32689 Kalletal, Germany
Fon +49(0)526465599920 • Fax +49(0)526465599930
info@td-pharma.de • www.td-pharma.de

Bisacodyl AIWA[®] 5 mg



Ingredients

Each gastro-resistant tablet contains 5 mg bisacodyl. Bisacodyl AIWA[®] 5 mg contains glucose (dextrose), lactose (milk sugar) and sucrose (sugar). Only take Bisacodyl AIWA[®] 5 mg after consulting your doctor if you know that you suffer from an intolerance to certain sugars.

Possible side effects

Abdominal cramps, abdominal pain, diarrhoea, nausea may be common. Rarely, dizziness may occur. These are presumably circulatory reactions due to constipation-related abdominal pain or the discharge process itself.

Pregnancy and breast-feeding

If you are pregnant or breast-feeding, think you may be pregnant or are planning to have a baby, ask your doctor or pharmacist for advice before taking this medicine.

Since the introduction of bisacodyl in 1952, no undesirable or harmful effects during pregnancy have become known. Studies on the use during pregnancy have not been conducted. Therefore, Bisacodyl AIWA[®] 5 mg, like all medicines, should only be used during pregnancy after consulting your doctor.

It has been shown that the active substance is not excreted in human milk. Bisacodyl AIWA[®] 5 mg can therefore be used during breast-feeding.

Warnings and precautions

Do not take Bisacodyl AIWA[®] 5 mg

- if you are allergic to bisacodyl or any of the other ingredients of this medicine.
- if you have a bowel obstruction.
- Do not give to children under 2 years of age.
- in cases of acute inflammatory disorders of the gastrointestinal tract.

Talk to your doctor or pharmacist before taking Bisacodyl AIWA[®] 5 mg. In constipation, laxatives should be taken only for short periods of time. If you have persistent constipation, you should ask your doctor or pharmacist for advice before taking this medicine.

Treatment is guided by the symptoms. Fluid and salt losses (especially affecting potassium) should be corrected as appropriate.

Children

Bisacodyl AIWA[®] 5 mg must not be used in children under 2 years of age. Bisacodyl AIWA[®] 5 mg should only be used in children on doctor's advice.

For more information please read the package leaflet!

Lactulose AIWA®

670 mg/ml Solution

active substance: lactulose



Packaging may vary

Application

Lactulose AIWA® contains a laxative called lactulose. It makes the stool softer and easier to pass, by drawing water into the bowel. It is not absorbed into your body.

Duration of treatment

The recommended dose for constipation:

	Starting dose		Maintenance dose	
	Adults and adolescents over 14 years	15-45 ml	corresponding to 10-30 g lactulose	15-30 ml
Children (7-14 years)	15 ml	corresponding to 10 g lactulose	10-15 ml	corresponding to 7-10 g lactulose
Children (1-6 years)	5-10 ml	corresponding to 3-7 g lactulose		
Babies	up to 5 ml	corresponding to up to 3 g lactulose		

Thereafter the dose can be reduced individually. The daily dose should be taken at once during the breakfast. It can take 2-3 days until the desired effect will be achieved since lactulose is not degraded until it reaches the colon.

Applications of Lactulose AIWA®

- It treats the symptoms of constipation.
- It treats a special liver disease (portal systemic encephalopathy).



Method of administration

Take your doses at the same time each day. The dose may be given once daily, for example during breakfast, or divided up to two doses a day.

Swallow the medicine quickly. Do not keep it in your mouth. You can take Lactulose AIWA® oral solution undiluted or diluted in some liquid. Use the measuring cup provided. During the treatment with laxatives you should drink sufficient amounts of fluids (approx. 2 l/day, equal to 6-8 glasses).

Contents of the pack

Lactulose AIWA® is a clear, viscous liquid, colourless or pale brownish-yellow solution. It is available in following pack sizes: Brownglass-bottles containing 200 ml, 500 ml or 1000 ml with a polyethylene screw cap or a polypropylene child resistant closure.

Pharmaceutical Company and Manufacturer

T&D Pharma GmbH
Lemgoer Straße 16 • 32689 Kalletal, Germany
Fon +49(0)526465599920 • Fax +49(0)526465599930
info@td-pharma.de • www.td-pharma.de

Lactulose AIWA[®]

670 mg/ml Solution



Ingredients

1 ml of Lactulose AIWA[®] solution contains 670 mg lactulose. There are no other ingredients.

Possible side effects

Very common:

- diarrhoea

Uncommon:

- disturbance of the electrolyte balance due to diarrhoea

Common:

- flatulence
- nausea
- vomiting
- abdominal pain

Not known:

- allergic reactions
- rash
- itching
- hives

Pregnancy and breast-feeding

If you are pregnant or breast-feeding, think you may be pregnant or are planning to have a baby, ask your doctor or pharmacist for advice before taking this medicine.

Children

Lactulose AIWA[®] should not normally be given to infants and smaller children as it can disturb the normal reflexes for passing stools. In special circumstances your doctor may prescribe Lactulose AIWA[®] for a child, infant or baby. In these cases your doctor will supervise the treatment carefully.

Warnings and precautions

Do not take Lactulose AIWA[®]:

- if you are allergic to lactulose
- if you suffer from intestinal obstruction (ileus)
- if you suffer from intestinal perforation or an increased risk of intestinal perforation
- if you suffer from (hereditary) fructose intolerance
- if you suffer from (hereditary) galactose intolerance (e.g. galactosaemia).

You should not take this medicine if you suffer from:

- disturbance of the water and electrolyte balance
- acute inflammation of the gastrointestinal tract (combined with abdominal pain, vomiting and fever)
- (hereditary) glucose-galactose malabsorption.

If you have been experiencing constipation for a prolonged period of time, you should consult your doctor and be examined before starting treatment with this medicine. Chronic impairment of bowel movement may be a sign of a more serious illness!

During the treatment with laxatives you should drink sufficient amounts of fluids (1.5 to 2 litres per day, equal to 6-8 glasses). If you have been taking this medicine for several days and feel no improvement or if your symptoms worsen, please consult your doctor. If you have persistent loose stools when taking this medicine for a prolonged period of time, you should not take this medicine and consult your doctor.

Diabetics:

Please note, however, that this medicine contains digestible carbohydrates in 15 ml of syrup, e.g. fructose (fruit sugar), galactose, lactose (milk sugar), corresponding to a maximum of 0.21 bu. Higher doses of this medicine are particularly required in the treatment of portal systemic encephalopathy; an adjustment of your antidiabetic medication may be necessary.

Please note, however, that this medicine contains digestible carbohydrates in 15 ml of syrup, e.g. fructose (fruit sugar), galactose, lactose (milk sugar), corresponding to a maximum of 0.21 bu. Higher doses of this medicine are particularly required in the treatment of portal systemic encephalopathy; an adjustment of your antidiabetic medication may be necessary.

This medicine may increase the loss of potassium induced by other medicines taken at the same time. These include certain diuretics, adrenal hormones (corticosteroids) and the antifungal medication amphotericin B.

In case of potassium deficiency, the sensitivity to cardiac glycosides (e.g. digitoxin) is increased.

Lactulose AIWA contains lactose, galactose and epilactose.

15 ml of lactulose contain 42.7 KJ (10.2 kcals) = 0.21 bu. The dose used for treatment may need to be taken into consideration for diabetics.

For more information please read the package leaflet

Lactulose AIWA®

Plum flavour 10 g/15 ml oral solution

Active substance: Lactulose



Packaging may vary

Duration of treatment

The recommended dose is:

	Starting dose		Maintenance dose	
Adults	15 – 45 ml daily	1 – 3 sachets, equivalent to 10 – 30 g lactulose	15 – 30 ml daily	1 – 2 sachets, equivalent to 10 – 20 g lactulose
Adolescents over 14 years	15 – 45 ml daily	1 – 3 sachets, equivalent to 10 – 30 g lactulose	15 – 30 ml daily	1 – 2 sachets, equivalent to 10 – 20 g lactulose
Children and adolescents (7 – 14 years)	15 ml daily	1 sachet, equivalent to 10 g lactulose	15 ml daily	1 sachet, equivalent to 10 g lactulose

For elderly patients (≥ 65 years) and patients with poor kidney or liver function, there are no special dosage recommendations.

Duration of administration: The treatment duration depends on the symptoms. It might take 2 - 3 days for the desired effect to occur because lactulose first has to be broken down in the colon.

Application of Lactulose AIWA® plum flavour

- It treats the symptoms of constipation
- Plum flavour and aroma
- Practical single dosage in sachets



Application

Lactulose AIWA® plum flavour is used to treat the symptoms of constipation.

Ingredients

The active substance is: lactulose.

One sachet (15 ml) of Lactulose AIWA® plum flavour contains 10 g lactulose (as lactulose syrup). The other ingredient is: plum flavouring. The plum flavouring consists of plum extract, ethanol, propylene glycol, flavouring and simple caramel.

Content of the pack

Lactulose AIWA® plum flavour is a clear, colourless to slightly brownish yellow, viscous oral solution with a plum aroma and taste, and is available in packs of 10 and 20 sachets.

Pharmaceutical Company and Manufacturer

T&D Pharma GmbH
Lemgoer Straße 16 • 32689 Kalletal, Germany
Fon +49(0)5264 655 999 20 • Fax +49(0)5264 655 999 30
info@td-pharma.de • www.td-pharma.de

Lactulose AIWA[®]

Plum flavour 10 g/15 ml oral solution



Method of administration

Take your doses at the same time every day. The dose can be taken once daily, for instance at breakfast, or divided into two to three doses per day.

Swallow the medicine quickly. Do not keep it in your mouth.

You can take Lactulose AIWA[®] plum flavour oral solution undiluted or diluted in liquid.

During treatment with laxatives, you should drink plenty of fluids (approximately 1.5 - 2 L/day, equivalent to 6 - 8 glasses).

The dose should be reduced if diarrhoea occurs.

Lactulose is available in bottles for accurate dosing in babies, infants and children up to 6 years of age.

Possible side effects

The following side effects are known with Lactulose AIWA[®] plum flavour:

- Flatulence (wind), especially during the first few days of treatment. It usually wears off after a few days.
- Nausea.
- Vomiting.
- An electrolyte imbalance due to diarrhoea may be detected in tests.
- Abdominal pain and diarrhoea may occur if a higher than recommended dose is used.
- Allergic reactions.
- Rash.
- Itching.
- Hives.

The frequency of these side effects is not known, i.e. the frequency cannot be assessed from the available data.

Pregnancy and breast-feeding

Lactulose AIWA[®] plum flavour can be used during pregnancy and breast-feeding.

If you are pregnant or breast-feeding, think you may be pregnant or are planning to have a baby, ask your doctor or pharmacist for advice before taking this medicine.

Children

Please do not administer Lactulose AIWA[®] plum flavour to children and adolescents under 14 years of age without firstly contacting your doctor regarding prescription and careful monitoring.

Lactulose is available in bottles for accurate dosing in babies, infants and children up to 6 years of age.

Warning and precautions

Do not take Lactulose AIWA[®] plum flavour

- if you are allergic to lactulose or any of the other ingredients of this medicine.
- if you suffer from galactosaemia (a serious genetic defect, in which galactose cannot be digested),
- if you suffer from acute inflammatory bowel disease (such as Crohn's disease or ulcerative colitis), a blockage in your bowel (apart from normal constipation), a bowel perforation or risk of a perforation in the gastrointestinal tract, or abdominal pain of unexplained cause.

If you suffer from gastric-cardia (Roemheld syndrome), tell your treating doctor before taking Lactulose AIWA[®] plum flavour. If you suffer from complaints such as flatulence or a feeling of bloating after use, stop treatment and consult your doctor.

In such cases, the doctor will carefully monitor your treatment.

Long-term use of unadjusted doses (leading to more than 2 - 3 loose stools per day) or abuse can lead to diarrhoea and disturbances of the electrolyte balance.

If you are an elderly patient or a patient in poor general condition and you will be taking lactulose over a period of more than 6 months, your doctor will regularly examine your blood electrolytes.

Please do not use Lactulose AIWA[®] plum flavour for more than two weeks without medical advice.

During treatment with laxatives, you should drink plenty of fluids (approximately 1.5 - 2 L/day, equivalent to 6 - 8 glasses).

Lactulose can increase the potassium loss caused by other medicines (e.g. thiazides, steroids and amphotericin B). As a result of the potassium deficiency, concomitant ingestion of cardiac glycosides may increase the effect of the glycosides.

Relatively high doses result in a decrease in pH in the colon. Medicines released in the colon pH-dependently (e.g. 5-ASA (5-aminosalicylic acid)) may therefore be inactivated.

Lactulose AIWA[®] plum flavour may contain small amounts of sugar

Lactulose AIWA[®] plum flavour may contain small amounts of sugar (lactose, fructose, galactose, tagatose or epilactose). If you have been told by your doctor that you have an intolerance to some sugars, contact your doctor before taking this medicinal product.

The dose normally used should not pose a problem for diabetes patients. 15 ml lactulose contains 42.7 KJ (10.2 Kcal) = 0.21 BU. Lactulose AIWA plum flavour.

For more information please read the package leaflet!

Panto AIWA® 20 mg gastro-resistant tablets



active substance: pantoprazole



Packaging may vary

Application

Panto AIWA® 20 mg contains the active substance pantoprazole, which blocks the 'pump' that produces stomach acid. Hence it reduces the amount of acid in your stomach. Panto AIWA® 20 mg is used for the short-term treatment of reflux symptoms (for example heartburn, acid regurgitation) in adults. Reflux is the backflow of acid from the stomach into the gullet ("food pipe"), which may become inflamed and painful. This may cause symptoms such as a painful burning sensation in the chest rising up to the throat (heartburn) and a sour taste in the mouth (acid regurgitation).

Ingredients

The active substance is pantoprazole. Each gastro-resistant tablet contains 20 mg pantoprazole (as sodium sesquihydrate 1.5 H₂O). The other ingredients are:

Tablet core: mannitol (Ph.Eur.), sodium carbonate, carboxymethyl starch sodium (type A), methacrylic acid-ethyl acrylate copolymer, calcium stearate (Ph.Eur.);

Tablet coating: Opadry White OY-D-7233, consisting of: hypromellose, titanium dioxide (E171), talc, macrogol 400, sodium dodecyl sulphate;

Gastro-resistant coating: Kollicoat MAE 30 DP, yellow, consisting of: methacrylic acid-ethyl acrylate copolymer dispersion 30%, propylene glycol, iron(III) oxide-hydroxide x H₂O (E172), titanium dioxide (E171), talc, purified water.

Applications of Panto AIWA® 20 mg

- short-term treatment of reflux symptoms (e.g. heartburn, acid regurgitation) in adults.



Method of administration

Take the tablet before a meal, at the same time every day. You should swallow the tablet whole with some water. Do not chew or break the tablet.

Duration of treatment

The recommended dose is one tablet a day. Do not exceed this recommended daily dose of 20 mg pantoprazole.

You should take this medicine for at least 2-3 consecutive days. Stop taking Panto AIWA® 20 mg when you are completely symptom-free. You may experience relief from your acid regurgitation and heartburn symptoms after just one day of treatment with Panto AIWA® 20 mg, but this medicine is not meant to bring immediate relief. If you have no symptom-relief after taking this medicine for 2 weeks continuously, consult your doctor. Do not take Panto AIWA® 20 mg for more than 4 weeks without consulting your doctor.

Contents of the pack

The gastro-resistant tablets are oval, biconvex and pale yellow. ALU/ALU blister packs with 7 and 14 gastro-resistant tablets.

Pharmaceutical Company and Manufacturer

T&D Pharma GmbH

Lemgoer Straße 16 • 32689 Kalletal, Germany
Fon +49(0)526465599920 • Fax +49(0)526465599930 info@
td-pharma.de • www.td-pharma.de

Panto AIWA[®] 20 mg

gastro-resistant tablets



Possible side effects

Severe hypersensitivity reactions (rare): may affect up to 1 in 1,000 patients
Hypersensitivity reactions, so-called anaphylactic reactions, anaphylactic shock and angioedema. Typical symptoms are:

swelling of the face, lips, mouth, tongue and/or throat, which may cause difficulty in swallowing or breathing; wheals (hives); severe dizziness with very fast heartbeat and heavy sweating.

Severe skin reactions (frequency not known: frequency cannot be estimated from the available data):

rash with swelling, blistering or peeling of the skin, losing skin and slight bleeding around eyes, nose, mouth or genitals and rapid deterioration of your general health, or rash when exposed to the sun.

Other severe reactions (frequency not known): yellowing of the skin and eyes (due to severe liver damage) or kidney problems such as painful urination and lower back pain with fever.

Other possible side effects include: Frequently observed side effects (up to 1 out of 10 users may be concerned): Benign gastric polyps

Uncommon side effects (may affect up to 1 in 100 patients)

headache, dizziness, diarrhoea, nausea, vomiting, bloating and flatulence, constipation, dry mouth, pain and discomfort in the upper abdomen, skin rash or hives, itching, feeling weak, exhausted or generally unwell, sleep disorders, increase in liver enzymes in blood tests.

Rare side effects (may affect up to 1 in 1,000 patients)

distortion or complete lack of the sense of taste, disturbances in vision such as blurred vision, pain in the joints, muscle pains, weight changes, raised body temperature, swelling of the extremities, depression, increased bilirubin and fat levels in blood (seen in blood tests), breast enlargement in males, high fever and a sharp drop in circulating granular white blood cells (seen in blood tests).

Very rare side effects (may affect up to 1 in 10,000 patients)

disorientation; reduction in the number of blood platelets, which may cause you to bleed or bruise more than normal; reduction in the number of white blood cells, which may lead to more frequent infections; coexisting abnormal reduction in the number of red and white blood cells as well as platelets (seen in blood tests).

Frequency not known (frequency cannot be estimated from the available data): hallucinations, confusion (especially in patients with a history of these symptoms), decreased level of sodium in the blood, decreased level of magnesium in the blood. Inflammation of the colon causing persistent watery.

Pregnancy and breast-feeding

You should not take this medicine if you are pregnant or breast-feeding. If you are pregnant or breast-feeding, think you may be pregnant or are planning to have a baby, ask your doctor or pharmacist for advice before taking this medicine.

Children and teenagers

Panto AIWA[®] 20 mg should not be used by children and teenagers under 18 years of age due to a lack of safety information for this age group.

Driving and using machines

If you experience side effects like dizziness or disturbed vision, you should not drive or use machines.

Warnings and precautions

Do not take Panto AIWA[®] 20 mg

- if you are allergic to pantoprazole or any of the other ingredients of this medicine
- if you are taking a medicine containing atazanavir (for the treatment of an HIV-infection). See "Other medicines and Panto AIWA[®] 20 mg".

Please talk to your doctor before taking Panto AIWA[®] 20 mg

- if you have been treated for heartburn or indigestion continuously for 4 or more weeks.
- if you are over 55 years old and taking non-prescription medicines for indigestion on a daily basis.
- if you are over 55 years old and have any new or recently changed reflux symptoms.
- if you have had a gastric ulcer or stomach surgery.
- if you have liver problems or jaundice (yellowing of skin or eyes).
- if you regularly see your doctor for serious complaints or conditions.
- if you are due to have an endoscopy or a breath test called 13C urea breath test.

Tell your doctor immediately, before or after taking this medicine, if you notice any of the following symptoms, which could be a sign of another, more serious, disease:

- unintentional weight loss (not related to a diet or an exercise programme)
- vomiting, particularly if repeated
- vomiting blood; this may appear as dark coffee grounds in your vomit
- blood in your stool; which may be black or tarry in appearance
- difficulty in swallowing or pain when swallowing
- you look pale and feel weak (anaemia)
- chest pain
- stomach pain
- severe and/or persistent diarrhoea, because this medicine has been associated with a small increase in infectious diarrhoea.

Your doctor may decide that you need some tests.

Please consult your doctor before you take this drug if

- you are about to undergo a creatin blood test (Chromogranin A)

You may experience relief from your acid reflux and heartburn symptoms after just one day of treatment with Panto AIWA[®] 20 mg, but this medicine is not meant to bring immediate relief. You should not take it as a preventive measure.

If you have been suffering from recurrent heartburn or indigestion for a longer period of time, remember to see your doctor regularly.

Panto AIWA[®] 20 mg may influence the effectiveness of other medicines. Please refer to the information in the package leaflet.

For more information please read the package leaflet!

Panto AIWA[®] 40 mg gastro-resistant tablets

active substance: pantoprazole



Packaging may vary

Application

Panto AIWA[®] 40 mg contains the active substance pantoprazole. Panto AIWA[®] 40 mg is a so-called selective proton pump inhibitor, a medicine that causes less acid to be produced in the stomach. It is used to treat acid-related disorders of the stomach and intestines.

Method of administration

Take the tablets 1 hour before a meal without chewing or crushing them. Swallow the tablets whole with some water without chewing them.

Applications of Panto AIWA[®] 40 mg

- Reflux oesophagitis. This is inflammation of the gullet, associated with the backflow of stomach acid.
- Infections with the bacterium *Helicobacter pylori* in patients with duodenal and stomach ulcers, in combination with two antibiotics (eradication therapy). The aim of this treatment is to destroy the bacteria and hence reduce the probability that these ulcers will reoccur.
- Stomach ulcers and duodenal ulcers.
- Zollinger-Ellison syndrome and other disorders where too much acid is produced in the stomach.



Ingredients

The active substance is pantoprazole.

Each gastro-resistant tablet contains 40 mg pantoprazole (as pantoprazole sodium sesquihydrate). The other ingredients are: **tablet core:** Mannitol (Ph.Eur.), sodium carbonate, sodium starch glycolate (type A), methacrylic acid-ethyl acrylate copolymer, calcium stearate (Ph. Eur.) [plant-based]; **tablet coating:** Opadry white OY-D-7233, consisting of: hypromellose, titanium dioxide (E171), talc, macrogol 400, sodium dodecyl sulphate; **gastro-resistant coating:** Kollicoat MAE 30 DP yellow, consisting of: methacrylic acid-ethyl acrylate copolymer dispersion 30%, propylene glycol, iron(III) hydroxide oxide x H₂O (E172), titanium dioxide (E171), talc, purified water.

Contents of the pack

Elliptic, biconvex, dark yellow gastro-resistant tablet. Alu/Alu blisters with 14 or 28 gastro-resistant tablets.

Pharmaceutical Company and Manufacturer

T&D Pharma GmbH
Lemgoer Straße 16 • 32689 Kalletal, Germany
Fon +49(0)526465599920 • Fax +49(0)526465599930
info@td-pharma.de • www.td-pharma.de

Panto AIWA[®] 40 mg

gastro-resistant tablets



Duration of treatment

The recommended dose depends on the condition being treated. Your doctor will prescribe you a dosage.

Adults and adolescents aged 12 years and older:

For treatment of reflux oesophagitis

The usual dose is one tablet daily. Your doctor may tell you to increase to 2 tablets daily. The duration of treatment in reflux oesophagitis is generally between 4 and 8 weeks. You doctor will tell you how long you should take your medicine.

Adults:

For treatment of infections with the *Helicobacter pylori* bacterium in patients with duodenal and stomach ulcers, in combination with two antibiotics (eradication therapy)

One tablet twice daily plus two antibiotic tablets, either amoxicillin, clarithromycin and metronidazole (or tinidazole), each twice daily together with the pantoprazole tablets. Take the first pantoprazole tablet 1 hour before breakfast, the second pantoprazole tablet 1 hour before your evening meal. Follow all of your doctor's instructions and read the antibiotic package leaflets carefully.

The usual duration of treatment is one to two weeks.

For treatment of stomach and duodenal ulcers

The usual dose is one tablet daily. After consultation with your doctor, the dose can be doubled. Your doctor will tell you how long you should keep taking the medicine. The duration of treatment for stomach ulcers is generally between 4 and 8 weeks. The duration of treatment for duodenal ulcers is generally between 2 and 4 weeks.

For long-term therapy of Zollinger-Ellison syndrome and other diseases where too much acid is produced in the stomach

The recommended starting dose is normally two tablets daily.

Take both tablets 1 hour before a meal. Depending on how much acid your stomach is producing, your doctor may further adjust the dose later on. If your doctor has prescribed you more than two tablets daily, the tablets should be taken twice daily.

If the doctor prescribes you a daily dose of more than four tablets, he/she will tell you exactly when you should stop taking the medicine.

Pregnancy and breast-feeding

There are no adequate data from the use of pantoprazole in pregnant women. Excretion of the active substance in human milk has been reported.

If you are pregnant or breast-feeding, think you may be pregnant or are planning to have a baby, ask your doctor or pharmacist for advice before taking this medicine. If you are pregnant, you should use this medicine only if your doctor thinks that the benefit to you is greater than the potential risk to your unborn child.

Driving and using machines

Panto AIWA[®] 40 mg has no or little influence on the ability to drive and use machines.

If you experience side effects such as dizziness or visual disturbances, you should not drive or use machines.

Children and adolescent

These tablets are not recommended for children below 12 years.

Panto AIWA[®] 40 mg

gastro-resistant tablets



Possible side effects

Serious allergic reactions (frequency: rare; affecting 1 to 10 in 10,000 patients treated):

Swelling of the tongue and/or throat, swallowing difficulties, nettle rash (hives), breathing difficulties, allergic facial swelling (Quincke's oedema / angioedema), severe dizziness with very rapid heartbeat and severe bouts of sweating.

Serious skin reactions (frequency: not known: frequency cannot be estimated from the available data):

Blistering of the skin and rapid deterioration of the general condition, skin erosions (including mild bleeding) of the eyes, nose, mouth/lips or genitals (Stevens-Johnson syndrome, Lyell's syndrome, erythema multiforme) and sensitivity to light.

Other serious reactions (frequency: not known: frequency cannot be estimated from the available data):

Yellowing of the skin and eyeballs (severe liver cell damage, jaundice) or fever, skin rash and enlarged kidneys, which can lead to painful urination and pain in the lower back area (serious kidney inflammation) and which may lead to kidney failure if it possibly progresses.

Other known side effects:

Frequently observed side effects (up to 1 out of 10 users may be concerned): Benign gastric polyps

Uncommon (affecting 1 to 10 in 1,000 patients treated)

Headache, dizziness, diarrhoea, nausea, vomiting, flatulence and escape of intestinal gases, constipation, dry mouth, abdominal pain and feeling unwell, skin rash, exanthem, eruption, itching, feeling weak, feeling exhausted or generally feeling unwell, sleep disorders, bone fractures (of the hip, wrist or spine).

Rare (affecting 1 to 10 in 10,000 patients treated)

Change or complete loss of the sense of taste, visual disturbances such as blurred vision, nettle rash, joint pain, muscle pain, weight changes, increased body temperature, high fever, swelling of the limbs (peripheral oedema), allergic reactions, depression, male breast enlargement.

Very rare (affecting less than 1 in 10,000 patients treated)

Disorientation.

Not known (cannot be estimated from the available data)

Hallucinations, confusion (especially among patients who already have a medical history of these symptoms), decrease in blood sodium level, decrease in blood magnesium level (see section 2), feeling of tingling or prickling, burning or feeling numb; rash, possibly associated with pain in the joints. Inflammation of the colon causing persistent watery diarrhoea

Side effects identified by blood tests

Uncommon (may affect up to 1 in 100 patients treated)

Rise in liver enzyme levels.

Rare (may affect up to 1 in 1,000 patients treated)

Rise in bilirubin levels; increased blood fat levels, sudden sharp decrease in certain circulating white blood cells (granulocytes), associated with high fever.

Very rare (affecting less than 1 in 10,000 patients treated)

Decrease in the number of blood platelets, which may possibly cause an increased tendency for bleeding and bruising; decrease in the number of white blood cells, which may possibly lead to increased occurrence of infections; excessive decrease in red and white blood cells and platelets, occurring all at the same time.

Panto AIWA[®] 40 mg

gastro-resistant tablets



Warnings and precautions

Do not take Panto AIWA[®] 40 mg

- if you are allergic (hypersensitive) to pantoprazole or any of the other ingredients of this medicine
- if you are allergic to medicines containing other proton pump inhibitors.

Talk to your doctor or pharmacist before taking Panto AIWA[®] 40 mg:

- if you have a severe liver disorder. Please tell your doctor if you have ever had any liver complaints. He will then monitor your liver enzyme levels more frequently, especially if you are taking Panto AIWA[®] as long-term therapy. If liver enzyme levels rise, treatment should be discontinued.
- if you have low vitamin B12 reserves or special risk factors for vitamin B12 deficiency and are taking pantoprazole as long-term therapy. Like all antacids, pantoprazole can lead to poorer absorption of vitamin B12 by the body.
- if, at the same time as pantoprazole, you are taking medicines containing atazanavir (to treat an HIV infection).

For more information, ask your doctor for advice.

- Taking proton pump inhibitors such as pantoprazole can slightly increase your risk of hip, wrist and spinal fractures, especially if taken over a period of more than one year. Tell your doctor if you have osteoporosis or if you are taking corticosteroids (these can increase the risk of osteoporosis).
- If you use Panto AIWA[®] 40 mg for more than three months, the magnesium level in your blood may decrease. Low magnesium levels may manifest as exhaustion, involuntary muscle contractions, confusion, seizures, a feeling of dizziness and an increased heart rate. If you experience any of these symptoms, tell your doctor immediately. Low magnesium levels can also lead to a reduction in potassium and calcium levels in the blood. Your doctor may carry out regular blood tests to monitor your magnesium levels.
- If you have had skin reactions as a result of treatment with a medicine similar to Panto AIWA[®] 40 mg which also reduces stomach acid. If you experience a skin rash, especially in skin areas exposed to the sun, tell your doctor immediately, as you may have to discontinue treatment with Panto AIWA[®] 40 mg. Also, do not forget to mention other harmful effects on the health, such as joint pain.

Tell your doctor immediately if you experience any of the following symptoms. Tell your doctor immediately, before or during treatment, especially if you notice any of the following symptoms that may indicate another serious disease:

- Unintentional weight loss
- Vomiting, especially repeated vomiting
- Vomiting of blood, which may look like dark coffee grounds in the vomit
- Blood in stool, which may appear black or tarry
- Difficulties or pain on swallowing
- Paleness and a feeling of weakness (anaemia)
- Chest pain
- Stomach ache
- Severe and/or persistent diarrhoea, as this medicine is associated with a slight rise in the risk of infectious diarrhoeal diseases.

Your doctor may arrange for some tests to rule out malignant disease, as pantoprazole can also alleviate the symptoms of cancer and thereby delay the detection of cancer. If symptoms persist despite treatment, further tests must be considered.

Please consult your doctor before you take this drug if

- You are about to undergo a creatin blood test (Chromogranin A)

If you take Panto AIWA[®] 40 mg over a prolonged period (more than 1 year), it is likely that your doctor will monitor you regularly. At each appointment, tell him about any new and out-of-the-ordinary symptoms and circumstances.

For more information please read the package leaflet!

LAXATIVE/GASTRO

**MINERALS/VITAMINS/
TRACE ELEMENTS**

FOOD SUPPLEMENT

Ferro AIWA® 100 mg film-coated tablets

active substance: dried iron(II) sulphate



Packaging may vary

Application

Ferro AIWA® 100 mg is used to treat iron deficiency.

Duration of treatment

The duration of treatment depends on the nature and severity of your condition. In general, iron therapy over a period of at least 8 weeks is required to achieve successful treatment. After blood levels (haemoglobin) have returned to normal, treatment should be continued for a further 6-8 weeks to replenish (top up) your iron reserves. Adults take 1 Ferro AIWA® 100 mg film-coated tablet twice daily.

Method of administration

The film-coated tablets should be taken in the morning on an empty stomach or 1 hour before meals. They should be swallowed whole with plenty of liquid to prevent possible damage to the mucous membranes caused by the tablets getting stuck. Swallow the tablet whole with water. Do not suck or chew the tablet and do not leave the tablet too long in your mouth.

Benefits of Ferro AIWA® 100 mg

- dried iron(II) sulphate to treat iron deficiency
- suitable for adults
- film-coated tablets for oral use



Contents of the pack

Ferro AIWA® 100 mg film-coated tablets are round, convex and brown in color. Original packs with 20, 50 or 100 film-coated tablets.

Ingredients

One film-coated tablet contains: 302.237 - 309.106 mg dried iron(II) sulphate (equivalent to 100 mg iron(II) ions). **The other ingredients are:** Maltodextrin, calcium stearate, lactose monohydrate, copovidone, macrogol 4000, talc, calcium carbonate E170, cocoa butter, magnesium stearate [vegetable], shellac, titanium dioxide E171, cellulose powder, maize starch, carboxymethyl starch sodium (type A), sodium dodecyl sulphate, sucrose, povidone K25, iron oxides and hydroxides (E172).

Marketing Authorisation Holder and Manufacturer

T&D Pharma GmbH
Lemgoer Straße 16 • 32689 Kalletal, Germany
Fon +49(0)5264 655 999 20 • Fax +49(0)5264 655 999 30
info@td-pharma.de • www.td-pharma.de

Ferro AIWA[®]

100 mg film-coated tablets



Warnings and precautions

Iron salts such as Ferro AIWA[®] 100 mg

- reduce the uptake of
- certain antibiotics (tetracyclines),
- penicillamine (used to treat rheumatic disease),
- levodopa (used in Parkinson's disease),
- methyldopa (used to treat high blood pressure),
- thyroxine (thyroid hormone) in patients treated with thyroxine.
- affect the uptake of quinolone antibiotics (e.g. ciprofloxacin, levofloxacin, norfloxacin, ofloxacin).
- may increase the irritant effect on the gastrointestinal lining when taken together with non-steroidal anti-inflammatory drugs (including, for example, a number of medicines commonly used for pain, fever and inflammation).

Iron uptake is reduced by the following medicines, if taken at the same time:

- cholestyramine (used to lower high blood fat levels),
- antacids (calcium, magnesium and aluminium salts used to bind stomach acid),
- or calcium and magnesium supplements.

You should not take Ferro AIWA[®] 100 mg within 2–3 hours after taking any of the above substances.

You should take Ferro AIWA[®] 100 mg 1 hour before or possibly between meals, as food may affect iron uptake.

Iron-binding substances such as phytates (e.g. from cereals), phosphoric acid salts (e.g. from milk), oxalic acid salts (e.g. from spinach or rhubarb), tannic acids (tea) or coffee inhibit the uptake of iron by the body.

Ferro AIWA[®] 100 mg contains lactose and sucrose. If you have been told by your doctor that you have an intolerance to some sugars, contact your doctor before taking this medicinal product.

Pregnancy and breast-feeding

Treatment with Ferro AIWA[®] 100 mg should be administered only after a careful benefit/risk assessment and consultation with your doctor. The high dosage of two Ferro AIWA[®] 100 mg film-coated tablets per day should not be prescribed over prolonged periods of time. Similarly during breast-feeding, Ferro AIWA[®] 100 mg should be prescribed only after a careful benefit/risk assessment and after consultation with your doctor.

Children and adolescents

This medicine is not intended for use in children and adolescents under 18 years of age.

Possible side effects

Common: Dark discoloration of the stools is often observed after taking oral iron supplements, but is completely harmless.

Uncommon: Gastrointestinal upset occasionally occurs, e.g. loss of appetite, gastric pressure, bloating and constipation.

Rare: In rare cases, hypersensitivity reactions (e.g. skin changes) may occur.

For more information please read the package leaflet!

LAXATIVE/GASTRO

MINERALS/VITAMINS/
TRACE ELEMENTS

FOOD SUPPLEMENT

B-FIT[®] with B12



strawberry-
vanilla
flavour

MADE IN
GERMANY



Packaging may vary

About B-FIT[®] with B12

Vitamin B12 (= cyanocobalamin) is a water-soluble and heat-sensitive vitamin, which cannot be produced by the human body itself. B-FIT[®] with B12 can improve the general well-being and thus increase the energy level and the general efficiency, especially in groups of persons, who are often affected by a vitamin B12 deficiency (e.g. elderly people, vegetarians and vegans, diabetic, people suffering from concentration weakness, people suffering from stress, fatigue and tiredness).

Contents of the pack

7 drinking ampoules à 7 ml = 49 ml food supplement

Benefits

Vitamin B12 contributes to

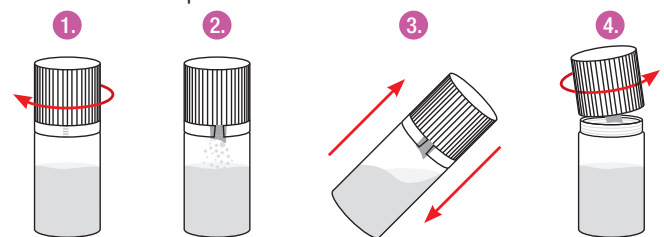
- normal energy-yielding metabolism
- normal functioning of the nervous system
- normal homocysteine metabolism
- normal mental function
- normal red blood cell formation
- normal functioning of the immune system
- the reduction of tiredness and fatigue



Recommended intake

The ingredients are mixed immediately before consumption in the ampoule. The cap contains vitamin B12-powder and the liquid is contained in the ampoule.

1. Close the cap clockwise (see arrows on the cap) until the white safety ring loosens
2. The vitamin B12-powder falls into the liquid
3. Shake the ampoule well
4. Twist off the cap counterclockwise (to the left) and drink the liquid



Pregnancy and breastfeeding

During pregnancy and while breastfeeding it is generally recommended to consult with your doctor before using a food supplement.

Manufacturer

T&D Pharma GmbH

Lemgoer Straße 16 • 32689 Kalletal, Germany
Fon +49(0)526465599920 • Fax +49(0)526465599930
info@td-pharma.de • www.td-pharma.de

B-FIT[®] with B12



FOOD SUPPLEMENT

Important instructions

Food supplements are no substitute for a varied and balanced diet as well as a healthy lifestyle. Store out of sight and reach of young children in a cool (< 25 °C), dry and light-protected place.

The recommended daily intake indicated should not be exceeded.

Ingredients

Water, fructose, dextrose, flavour, acidifier citric acid, preservative potassium sorbate, releasing agent silicon dioxide, maltodextrin, colouring anthocyanins, cyanocobalamin (vitamin B12).

	per daily portion (= 1 drinking ampoule)	NRV* per daily portion
Vitamin B12	20.0 µg	800 %

* Nutrient reference values; daily reference intakes for vitamins and minerals (adults) according to Regulation (EU) No. 1169/2011.

FOOD SUPPLEMENT

For more information please read the customer information leaflet

Centrovit AIWA®



FOOD SUPPLEMENT

MADE IN GERMANY

Description

The specific composition of Centrovit AIWA® contains a selection of vitamins and minerals. These fulfil a variety of tasks in the human body.

Method of administration

Swallow one tablet daily with liquid.

Ingredients

Calcium phosphate, magnesium oxide, bulking agent microcrystalline cellulose, vitamin C, iron fumarate, glazing agent hydroxypropyl methyl cellulose, vitamin E, niacin, zinc oxide, anti-caking agent polyvinylpyrrolidone, pantothenic acid, anti-caking agent magnesium salts of fatty acids, vitamin B6, manganese sulphate, copper sulphate, colouring agent titanium dioxide, riboflavin, thiamin, glazing agent hydroxypropyl cellulose, vitamin A, lutein, anti-caking agent stearic acid, anti-caking agent talcum, folic acid, colouring agent iron oxide, chromium (III) chloride, potassium iodide, sodium selenate, sodium molybdate, vitamin K1, biotin, vitamin B12, vitamin D3.



Packaging may vary

Benefits of Centrovit AIWA®

- It combines a wide spectrum of vitamins and minerals in one tablet.
- It is suitable for those who want to support their own body, when an adequate nutritional supply by a basic diet cannot be guaranteed.



Contents of the pack

32 coated tablets à 1.45 g = 46.4 g food supplement with vitamins, minerals and lutein.

Manufacturer

T&D Pharma GmbH
Lemgoer Straße 16 • 32689 Kalletal, Germany
Fon +49(0)526465599920 • Fax +49(0)526465599930
info@td-pharma.de • www.td-pharma.de

FOOD SUPPLEMENT



Warnings and precautions

Food supplements are no substitute for a varied, balanced diet and a healthy lifestyle. Store in a cool (< 25 °C), dry and light-protected place, out of sight and reach of young children.

The recommended daily intake indicated should not be exceeded.

Children and adolescents

Centrovit AIWA[®] is not suitable for children and adolescents under the age of 17 years.

Pregnancy and breast-feeding

During pregnancy and breastfeeding you should consult with your doctor or pharmacist before taking a dietary supplement.

Centrovit AIWA®



FOOD SUPPLEMENT

MADE IN GERMANY



Packaging may vary

Description

The specific composition of Centrovit AIWA® contains a selection of vitamins, minerals and trace elements. These fulfill a variety of tasks in the human body with the following characteristics and properties.

Contents of the pack

20 effervescent tablets à 4.5 g = 90 g dietary supplement with vitamins, minerals, trace elements, lutein and sweeteners.

Benefits of Centrovit AIWA® effervescent tablets

- It is suitable for those who want to support their own body, when an adequate nutritional supply by a basic diet cannot be guaranteed.



Ingredients

Acidifier citric acid, acidity regulator sodium hydrogen carbonate, dicalcium phosphate, magnesium carbonate, humectant sorbitol, inulin, vitamin C, acidity regulator sodium carbonate, flavour, iron sulphate, zinc sulphate, sweetener aspartame, vitamin E, starch, maltodextrin, niacin, red beet juice powder, cupric gluconate, sweetener acesulfame K, pantothenic acid, vitamin B6, manganese sulphate, sweetener sucralose, sweetener saccharin sodium, vitamin B2, vitamin B1, vitamin A, lutein, folic acid, potassium iodate, chromium (III) chloride, sodium selenate, sodium molybdate, vitamin K1, D-biotin, vitamin B12, vitamin D3. Contains a source of phenylalanine.

Method of administration

Dissolve and drink one effervescent tablet daily in a glass of water (250 ml).

Manufacturer

T&D Pharma GmbH
Lemgoer Straße 16 • 32689 Kalletal, Germany
Fon +49(0)526465599920 • Fax +49(0)526465599930
info@td-pharma.de • www.td-pharma.de

FOOD SUPPLEMENT



Warnings and precautions

Food supplements are no substitute for a varied, balanced diet and a healthy living. Store in a cool (< 25 °C), dry and light-protected place, out of sight and reach of young children.

The recommended daily intake indicated should not be exceeded.

Centrovit AIWA® is not suitable for children and adolescents under the age of 17 years. Before taking Centrovit AIWA® consult with your doctor.

Pregnancy and breast-feeding

During pregnancy and breastfeeding you should consult with your doctor or pharmacist before taking a dietary supplement.

About Centrovit AIWA®

Centrovit AIWA® combines a wide spectrum of vitamins, minerals and trace elements in one effervescent tablet. It is suitable for those who want to support their own body, when an adequate nutritional supply by a basic diet cannot be guaranteed. The fruity orange flavour and the administration form as an effervescent tablet allows a simple and uncomplicated intake.

Cranberry AIWA®

Power from Nature



gluten
free

MADE IN
GERMANY

About Cranberry AIWA®

Cranberry AIWA® is characterized by a combination of vitamin C and a high-quality extract of cranberry.

Recommended intake

Daily take two soft capsules unchewed with liquid to a meal.

Contents of the pack

30 soft capsules à 1210 mg = 36.3 g
food supplement with cranberry extract and vitamin C



Packaging may vary

Benefits

- as prophylaxis for urinary tract infections and to possibly avoid antibiotics
- Vitamin C supports the immune system and is a free radical scavenger
- no damage to the intestinal flora
- reduced development of resistance
- suitable for children and pregnant women

Vitamin C contributes to the maintenance of a normal function of the immune system and protects cells from oxidative stress.



Manufacturer

T&D Pharma GmbH
Lemgoer Straße 16 • 32689 Kalletal, Germany
Fon +49 (0) 5264 655 999 20 • Fax +49 (0) 5264 655 999 30
info@td-pharma.de • www.td-pharma.de

Cranberry AIWA®



Important instructions

Food supplements are no substitute for a varied and balanced diet as well as a healthy lifestyle. Store in a cool (< 25 °C), dry and light-protected place, out of the sight and reach of young children.

The recommended daily intake indicated should not be exceeded.

Ingredients

Soybean oil (refined), proanthocyanidin-containing cranberry dry extract 25:1, gelatin, vegetable fats (coconut, palm kernel), L-ascorbic acid (vitamin C), humectant glycerin, emulsifier soy-lecithins, stabiliser beeswax, humectant sorbitol, colour iron oxides and iron hydroxide.

	per daily portion (2 capsules)	% NRV* per 2 capsules
Cranberry dry extract 25:1 native thereof proanthocyanidins (PAC)	600 mg 36 mg	**
Vitamin C	160 mg	200 %

*Nutrient reference values for the daily intake (adults) for vitamins and minerals according to Regulation (EU) No.1169/2011

** No NRV defined

D-Day[®] long

soft capsules



Only once
a week!

MADE IN
GERMANY

About D-Day[®] long

D-Day[®] long soft capsules contain vitamin D, an essential nutrient for the metabolism with multiple functions.

Recommended intake

Take one capsule once a week with water and a main meal. It is best to take the capsules always at the same time, for example, on Sundays for breakfast.

Contents of the pack

30 soft capsules à 412 mg = 12.4 g
food supplement with vitamin D3

Pregnancy and breastfeeding

During pregnancy and while breastfeeding it is generally recommended to consult with your doctor before using a food supplement.

Benefits

Vitamin D contributes to

- the maintenance of normal bones and normal muscle function
- the normal function of the immune system
- normal blood calcium levels



Packaging may vary

Manufacturer

T&D Pharma GmbH
Lemgoer Straße 16 • 32689 Kalletal, Germany
Fon +49(0) 5264 655 999 20 • Fax +49(0) 5264 655 999 30
info@td-pharma.de • www.td-pharma.de



Important instructions

Food supplements are no substitute for a varied and balanced diet as well as a healthy lifestyle. Store out of sight and reach of young children in a cool (< 25 °C), dry and light-protected place.

The recommended daily intake indicated should not be exceeded.

In addition to D-Day[®] long no further vitamin D supplements should be taken.

D-Day[®] long is not suitable for children under 11 years.

Ingredients

Sunflower oil, gelatin (bovine), humectant glycerine, cholecalciferol (vitamin D3), colour riboflavin, colour titanium dioxide, water.

	per weekly intake (= 1 capsule)	this corresponds to a daily intake of	% NRV* of the daily intake
Vitamin D3	140 µg (5600 I.U.)	20 µg (800 I.U.)	400 %

* (Nutrient reference values); reference values for the daily intake (adults) for vitamins and minerals according to Regulation (EU) No. 1169/2011.

GEM OMEGA 3[®]

soft gelatin capsules



gluten-
and lactose
free

MADE IN
GERMANY

About GEM OMEGA 3[®]

GEM OMEGA 3[®] soft gelatin capsules is a food supplement containing a special combination of valuable omega-3 fatty acids, especially eicosapentaenoic acid (EPA) and docosahexaenoic acid (DHA), as well as vitamin E.

Recommended intake

Take 2 capsules, 3 times daily with plenty of water, distributed throughout the day at mealtimes.

Contents of the pack

30 soft gelatin capsules à 725 mg = 21.8 g
food supplement with fish oil and vitamin E

Pregnancy and breastfeeding

During pregnancy and while breastfeeding it is generally recommended to consult with your doctor before using a food supplement.

Benefits

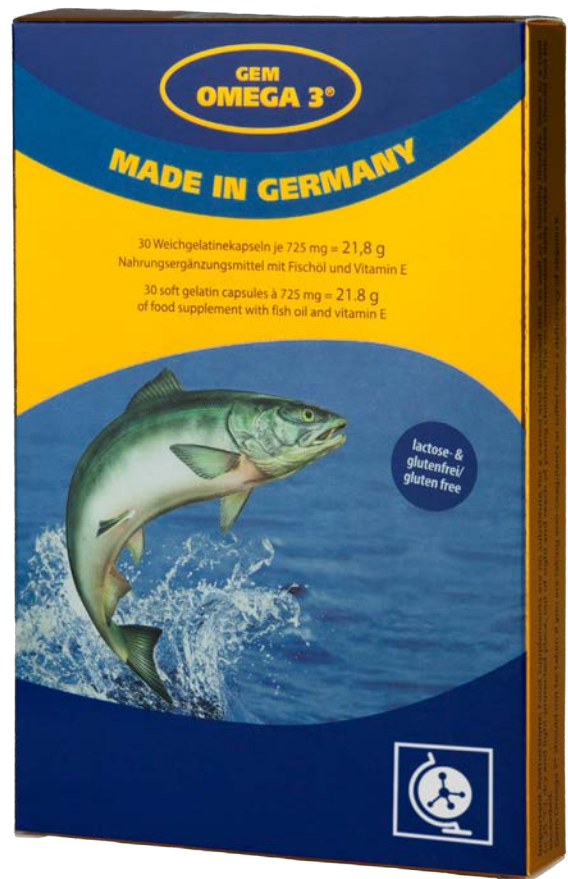
A daily intake of 250 mg DHA contributes to

- maintenance of normal brain function
- the maintenance of normal vision

In addition, a daily intake of 250 mg DHA and EPA contribute to normal function of the heart.

Vitamin E

- contributes to the protection of cells from oxidative stress



Packaging may vary

Manufacturer

T&D Pharma GmbH

Lemgoer Straße 16 • 32689 Kalletal, Germany
Fon +49(0)5264 655 999 20 • Fax +49(0)5264 655 999 30
info@td-pharma.de • www.td-pharma.de

GEM OMEGA 3[®]



Important instructions

Food supplements are no substitute for a varied and balanced diet as well as a healthy lifestyle. Store out of sight and reach of young children in a cool (< 25 °C), dry and light-protected place.

The recommended daily intake indicated should not be exceeded.

GEM OMEGA 3[®] should not be taken if you are taking anti-coagulants or suffer from a deficiency of vitamin K.

Ingredients

Fish oil, gelatin (bovine), humectant glycerin, vitamin E, water.

	per daily portion (= 6 soft gelatin capsules)	NRV* per daily portion
Omega-3 fatty acids thereof	924 mg	**
EPA	480 mg	**
DHA	306 mg	**
Vitamin E (α-TE)	36 mg	300 %

* (Nutrient reference values); reference values for the daily intake (adults) for vitamins and minerals according to Regulation (EU) No. 1169/2011.

** No NRV available.

German Active for work

effervescent tablets



with
sweeteners/
sugar free

orange
flavour

MADE IN
GERMANY

About German Active for work

German Active for work effervescent tablets contain magnesium and vitamins for your daily vitality.

Recommended intake

Dissolve and drink one effervescent tablet daily in a glass of water (250 ml).

Contents of the pack

20 effervescent tablets à 4.5 g = 90 g food supplement with magnesium and vitamins

Pregnancy and breastfeeding

During pregnancy and while breastfeeding it is generally recommended to consult with your doctor before using a food supplement.

Benefits

Vitamin B12 contributes to

- the reduction of tiredness and fatigue
- normal functioning of the nervous system and normal psychological function
- the normal function of the immune system

Magnesium, biotin, vitamin C and vitamin B6 contribute to

- normal functioning of the nervous system
- normal psychological function

Magnesium, pantothenic acid, vitamin C, vitamin B2 and vitamin B6 contribute to

- the reduction of tiredness and fatigue

Pantothenic acid contributes to

- normal mental function

Vitamin E and vitamin B2 contribute to

- the protection of cells from oxidative stress



Packaging may vary

Manufacturer

T&D Pharma GmbH

Lemgoer Straße 16 • 32689 Kalletal, Germany
Fon +49(0)5264 655 999 20 • Fax +49(0)5264 655 999 30
info@td-pharma.de • www.td-pharma.de



Important instructions

Food supplements are no substitute for a varied and balanced diet as well as a healthy lifestyle. Store out of sight and reach of young children in a cool (< 25 °C), dry and light-protected place.

The recommended daily intake indicated should not be exceeded.

Contains a source of phenylalanine.

Ingredients

Acidifier citric acid, acidity regulator sodium hydrogen carbonate, magnesium carbonate, inulin, L-ascorbic acid (vitamin C), humectant sorbitol, starch, anti-caking agent tricalcium phosphate, flavour, sweetener aspartame, nicotinamide (niacin), DL- α -tocopheryl acetate (vitamin E), maltodextrin, red beet juice powder, sweetener ace-sulfame K, calcium-D-pantothenate (pantothenic acid), riboflavin 5'-phosphate-sodium (vitamin B2), pyridoxine hydrochloride (vitamin B6), thiamine hydrochloride (vitamin B1), pteroylmonoglutamic acid (folic acid), D-biotin, cyanocobalamin (vitamin B12).

	per daily portion (1 effervescent tablet)	NRV* per daily portion
Magnesium	150 mg	40 %
Vitamin C	80 mg	100 %
Niacin (NE)	20 mg	100 %
Pantothenic acid	16.0 mg	100 %
Vitamin E (α -TE)	12 mg	100 %
Pyridoxine (vitamin B6)	1.4 mg	100 %
Riboflavin (Vitamin B2)	1.4 mg	100 %
Thiamine (vitamin B1)	1.1 mg	100 %
Folic acid	200 μ g	100 %
Vitamin B12	2.5 μ g	100 %
Biotin	50 μ g	100 %

* (Nutrient reference values); reference values for the daily intake (adults) for vitamins and minerals according to Regulation (EU) No. 1169/2011.

German Apple cure

effervescent tablets



with
sweeteners/
sugar free

apple
flavour

MADE IN
GERMANY

About German Apple cure

German Apple cure effervescent tablets are a combination of apple cider vinegar powder and vitamin B6, which is suitable for anyone who wants to support their body with vitamin B6 and appreciates apple cider vinegar.

Recommended intake

Dissolve and drink one effervescent tablet daily in a glass of water (250 ml).

Contents of the pack

20 effervescent tablets à 4.5 g = 90 g food supplement with apple cider vinegar powder and vitamin B6

Pregnancy and breastfeeding

During pregnancy and while breastfeeding it is generally recommended to consult with your doctor before using a food supplement.

Benefits

Pyridoxine (vitamin B6) contributes to

- normal energy-yielding metabolism
- normal protein and glycogen metabolism
- the normal function of the immune system
- the normal red blood cell formation
- normal psychological function
- the reduction of tiredness and fatigue



Manufacturer

T&D Pharma GmbH
Lemgoer Straße 16 • 32689 Kalletal, Germany
Fon +49(0)5264 655 999 20 • Fax +49(0)5264 655 999 30
info@td-pharma.de • www.td-pharma.de

German Apple Cure



Important instructions

Food supplements are no substitute for a varied and balanced diet as well as a healthy lifestyle. Store out of sight and reach of young children in a cool (< 25 °C), dry and light-protected place.

The recommended daily intake indicated should not be exceeded.

Contains a source of phenylalanine.

Ingredients

Acidifier citric acid, acidity regulator sodium hydrogen carbonate, acidity regulator sodium carbonate, apple cider vinegar powder, humectant sorbitol, starch, flavour, anti-caking agent tricalcium phosphate, inulin, sweetener aspartame, sweetener acesulfame K, vitamin B6, colouring riboflavin 5'-phosphate sodium, maltodextrin.

	per daily portion (1 effervescent tablet)	NRV* per daily portion
Apple cider vinegar extract	256.5 mg	**
Vitamin B6	2.0 mg	143 %

* (Nutrient reference values); reference values for the daily intake (adults) for vitamins and minerals according to Regulation (EU) No. 1169/2011.

** no NRV defined

German Calcium

effervescent tablets



with
sweeteners/
sugar free

lemon
flavour

MADE IN
GERMANY

About German Calcium

German Calcium effervescent tablets contain calcium for your daily vitality.

Recommended intake

Dissolve and drink one effervescent tablet daily in a glass of water (250 ml).

Contents of the pack

20 effervescent tablets à 4.5 g = 90 g food supplement with calcium

Pregnancy and breastfeeding

During pregnancy and while breastfeeding it is generally recommended to consult with your doctor before using a food supplement.

Benefits

Calcium contributes to

- normal muscle function
- normal blood clotting
- normal energy-yielding metabolism

Calcium is needed for the maintenance of normal bones and normal teeth.



Packaging may vary

Manufacturer

T&D Pharma GmbH

Lemgoer Straße 16 • 32689 Kalletal, Germany
Fon +49(0)526465599920 • Fax +49(0)526465599930
info@td-pharma.de • www.td-pharma.de

German Calcium



Important instructions

Food supplements are no substitute for a varied and balanced diet as well as a healthy lifestyle. Store out of sight and reach of young children in a cool (< 25 °C), dry and light-protected place.

The recommended daily intake indicated should not be exceeded.

Contains a source of phenylalanine.

Ingredients

Acidifier citric acid, calcium carbonate, acidity regulator sodium hydrogen carbonate, inulin, acidity regulator sodium carbonate, anti-caking agent tricalcium phosphate, starch, flavour, sweetener aspartame, sweetener acesulfame K, acidifier malic acid, colour riboflavin-5'-phosphate-sodium.

	per daily portion (1 effervescent tablet)	NRV* per daily portion
Calcium	500 mg	62.5 %

* (Nutrient reference values); reference values for the daily intake (adults) for vitamins and minerals according to Regulation (EU) No. 1169/2011.

German Calcium + D3

effervescent tablets



with
sweeteners/
sugar free

orange-
grapefruit
flavour

MADE IN
GERMANY

About German Calcium + D3

German Calcium + D3 effervescent tablets contain calcium and vitamin D3 for your daily vitality.

Recommended intake

Dissolve and drink one effervescent tablet daily in a glass of water (250 ml).

Contents of the pack

20 effervescent tablets à 4.5 g = 90 g food supplement with calcium and vitamin D3

Pregnancy and breastfeeding

During pregnancy and while breastfeeding it is generally recommended to consult with your doctor before using a food supplement.

Benefits

Calcium contributes to

- normal muscle function
- normal blood clotting
- normal energy-yielding metabolism

Calcium is needed for the maintenance of normal bones and normal teeth.

Vitamin D3 contributes to

- the maintenance of normal bones and normal teeth
- the normal function of the immune system
- the maintenance of normal muscle function
- normal absorption/utilization of calcium and phosphorus
- normal blood calcium levels



Packaging may vary

Manufacturer

T&D Pharma GmbH
Lemgoer Straße 16 • 32689 Kalletal, Germany
Fon +49 (0) 5264 655 999 20 • Fax +49 (0) 5264 655 999 30
info@td-pharma.de • www.td-pharma.de

German Calcium + D3



Important instructions

Food supplements are no substitute for a varied and balanced diet as well as a healthy lifestyle. Store out of sight and reach of young children in a cool (< 25 °C), dry and light-protected place.

The recommended daily intake indicated should not be exceeded.

Contains a source of phenylalanine.

Ingredients

Acidifier citric acid, calcium carbonate, acidity regulator sodium hydrogen carbonate, acidity regulator sodium carbonate, humectant sorbitol, inulin, starch, flavours, anti-caking agent tricalcium phosphate, sweetener aspartame, sweetener acesulfame K, red beet juice powder (maltodextrin, red beet juice powder), colour riboflavin 5'-phosphate-sodium, sweetener sucralose, cholecalciferol (vitamin D3).

	per daily portion (1 effervescent tablet)	NRV* per daily portion
Calcium	500 mg	62.5 %
Vitamin D3	2.5 µg	50 %

* (Nutrient reference values); reference values for the daily intake (adults) for vitamins and minerals according to Regulation (EU) No. 1169/2011.

German Calcium + Vitamin C

effervescent tablets



with
sweeteners/
sugar free

lemon
flavour

MADE IN
GERMANY

About German Calcium + D3

German Calcium + Vitamin C effervescent tablets contain calcium and vitamin C for your daily vitality.

Recommended intake

Dissolve and drink one effervescent tablet daily in a glass of water (250 ml).

Contents of the pack

20 effervescent tablets à 4.5 g = 90 g food supplement with calcium and vitamin C

Pregnancy and breastfeeding

During pregnancy and while breastfeeding it is generally recommended to consult with your doctor before using a food supplement.

Benefits

Calcium contributes to

- normal muscle function
- normal blood clotting
- normal energy-yielding metabolism

Calcium is needed for the maintenance of normal bones and normal teeth.

Vitamin C contributes to

- the normal function of the immune system
- maintain the normal function of the immune system during and after intense physical exercise
- the reduction of tiredness and fatigue
- normal collagen formation for the normal function of skin, gums and teeth
- normal energy-yielding metabolism
- normal functioning of the nervous system

Vitamin C increases iron absorption.



Packaging may vary

Manufacturer

T&D Pharma GmbH

Lemgoer Straße 16 • 32689 Kalletal, Germany
Fon +49(0)5264 655 999 20 • Fax +49(0)5264 655 999 30
info@td-pharma.de • www.td-pharma.de

German Calcium + Vitamin C



Important instructions

Food supplements are no substitute for a varied and balanced diet as well as a healthy lifestyle. Store out of sight and reach of young children in a cool (< 25 °C), dry and light-protected place.

The recommended daily intake indicated should not be exceeded.

Contains a source of phenylalanine.

Ingredients

Acidifier citric acid, calcium carbonate, acidity regulator sodium hydrogen carbonate, acidity regulator sodium carbonate, inulin, humectant sorbitol, L-ascorbic acid (vitamin C), anti-caking agent tricalcium phosphate, starch, flavours, sweetener aspartame, sweetener acesulfame K, sweetener sucralose, colour riboflavin 5'-phosphate-sodium.

	per daily portion (1 effervescent tablet)	NRV* per daily portion
Calcium	300 mg	37.5 %
Vitamin C	75 mg	94 %

* (Nutrient reference values); reference values for the daily intake (adults) for vitamins and minerals according to Regulation (EU) No. 1169/2011.

German Iron

effervescent tablets



with
sweeteners/
sugar free

cherry
flavour

MADE IN
GERMANY

About German Iron

German Iron effervescent tablets contain iron for your daily vitality.

Recommended intake

Dissolve and drink one effervescent tablet daily in a glass of water (250 ml).

Contents of the pack

20 effervescent tablets à 4.5 g = 90 g food supplement with iron

Pregnancy and breastfeeding

During pregnancy and while breastfeeding it is generally recommended to consult with your doctor before using a food supplement.

Benefits

Iron contributes to

- normal formation of red blood cells and haemoglobin
- normal oxygen transport in the body
- the normal function of the immune system
- the reduction of tiredness and fatigue



Packaging may vary

Manufacturer

T&D Pharma GmbH
Lemgoer Straße 16 • 32689 Kalletal, Germany
Fon +49(0)5264 655 999 20 • Fax +49(0)5264 655 999 30
info@td-pharma.de • www.td-pharma.de



Important instructions

Food supplements are no substitute for a varied and balanced diet as well as a healthy lifestyle. Store out of sight and reach of young children in a cool (< 25 °C), dry and light-protected place.

The recommended daily intake indicated should not be exceeded.

Contains a source of phenylalanine.

Iron-based food supplements should only be used if the iron supply is insufficient.

Ingredients

Acidifier citric acid, acidity regulator sodium hydrogen carbonate, acidity regulator sodium carbonate, humectant sorbitol, starch, iron gluconate, flavour, anti-caking agent tricalcium phosphate, inulin, sweetener aspartame, maltodextrin, red beet juice powder, sweetener acesulfame K, sweetener sucralose, colour ponceau 4R

	per daily portion (1 effervescent tablet)	NRV* per daily portion
Iron	14 mg	100 %

* (Nutrient reference values); reference values for the daily intake (adults) for vitamins and minerals according to Regulation (EU) No. 1169/2011.

German Magnesium

effervescent tablets



with
sweeteners/
sugar free

orange
flavour

MADE IN
GERMANY

About German Magnesium

German Magnesium effervescent tablets contain calcium for your daily vitality.

Recommended intake

Dissolve and drink one effervescent tablet daily in a glass of water (250 ml).

Contents of the pack

20 effervescent tablets à 4.3 g = 86 g food supplement with magnesium

Pregnancy and breastfeeding

During pregnancy and while breastfeeding it is generally recommended to consult with your doctor before using a food supplement.

Benefits

Magnesium contributes to

- normal muscle function
- normal energy-yielding metabolism and electrolyte balance
- the reduction of tiredness and fatigue
- the normal functioning of the nerves and normal psychological function
- the maintenance of normal bones and teeth



Packaging may vary

Manufacturer

T&D Pharma GmbH

Lemgoer Straße 16 • 32689 Kalletal, Germany
Fon +49(0)5264 655 999 20 • Fax +49(0)5264 655 999 30
info@td-pharma.de • www.td-pharma.de

German Magnesium



Important instructions

Food supplements are no substitute for a varied and balanced diet as well as a healthy lifestyle. Store out of sight and reach of young children in a cool (< 25 °C), dry and light-protected place.

The recommended daily intake indicated should not be exceeded.

Contains a source of phenylalanine.

Ingredients

Acidifier citric acid, magnesium carbonate, acidity regulator sodium hydrogen carbonate, inulin, starch, flavour, sweetener aspartame, sweetener acesulfame K, sweetener sucralose, red beet juice powder, (maltodextrin; red beet juice powder), colouring agent riboflavin 5'-phosphate sodium

	per daily portion (1 effervescent tablet)	NRV* per daily portion
Magnesium	200 mg	53 %

* (Nutrient reference values); reference values for the daily intake (adults) for vitamins and minerals according to Regulation (EU) No. 1169/2011.

German Multivitamin

effervescent tablets



with
sweeteners/
sugar free

orange
flavour

MADE IN
GERMANY

About German Multivitamin

German Multivitamin effervescent tablets contain vitamins for your daily vitality.

Benefits

Vitamin C contributes to

- the normal function of the immune system
- maintain the normal function of the immune system during and after intense physical exercise
- the reduction of tiredness and fatigue
- normal energy-yielding metabolism

Niacin contributes to

- normal functioning of the nervous system
- the reduction of tiredness and fatigue
- the maintenance of normal skin and normal mucous membranes

Vitamin E contributes to

- the protection of cells from oxidative stress
- Pantothenic acid contributes to
- the reduction of tiredness and fatigue
- normal mental performance

Vitamin B1 (thiamine) contributes to

- normal functioning of the nervous system
- normal energy-yielding metabolism
- the normal function of the heart

Biotin contributes to

- the maintenance of normal hair and normal skin

Folic acid contributes to

- normal blood formation
- the normal function of the immune system

Vitamin B12 contributes to

- normal energy-yielding metabolism
- normal functioning of the nervous system
- normal mental function
- normal red blood cell formation
- normal functioning of the immune system
- the reduction of tiredness and fatigue



Packaging may vary

Contents of the pack

20 effervescent tablets à 4.5 g = 90 g
food supplement with vitamins

Manufacturer

T&D Pharma GmbH
Lemgoer Straße 16 • 32689 Kalletal, Germany
Fon +49(0)5264 655 999 20 • Fax +49(0)5264 655 999 30
info@td-pharma.de • www.td-pharma.de

German Multivitamin



Recommended intake

Dissolve and drink one effervescent tablet daily in a glass of water (250 ml).

Pregnancy and breastfeeding

During pregnancy and while breastfeeding it is generally recommended to consult with your doctor before using a food supplement.

Important instructions

Food supplements are no substitute for a varied and balanced diet as well as a healthy lifestyle. Store out of sight and reach of young children in a cool (< 25 °C), dry and light-protected place.

The recommended daily intake indicated should not be exceeded.

Contains a source of phenylalanine.

Ingredients

Acidifier citric acid, acidity regulator sodium hydrogen carbonate, humectant sorbitol, acidity regulator sodium carbonate, starch, inulin, L-ascorbic acid (vitamin C), anti-caking agent tricalcium phosphate, sweetener aspartame, flavour, DL- α -tocopheryl acetate (vitamin E), nicotinamide (niacin), sweetener acesulfame K, calcium-D-pantothenate (pantothenic acid), red beet juice powder (maltodextrin, red beet juice powder), sweetener sucralose, riboflavin 5'-phosphate-sodium (vitamin B2), pyridoxine hydrochloride (vitamin B6), thiamine hydrochloride (vitamin B1), pteroylmonoglutamic acid (folic acid), D-biotin, cyanocobalamin (vitamin B12).

	per daily portion (1 effervescent tablet)	NRV* per daily portion
Vitamin C	80 mg	100 %
Niacin (NE)	16 mg	100 %
Vitamin E (α -TE)	12 mg	100 %
Pantothenic acid	6,0 mg	100 %
Pyridoxine (vitamin B6)	1.4 mg	100 %
Riboflavin (Vitamin B2)	1.4 mg	100 %
Thiamine (vitamin B1)	1.1 mg	100 %
Biotin	50 μ g	100 %
Folid acid	200 μ g	100 %
Vitamin B12	2.5 μ g	100 %

* (Nutrient reference values); reference values for the daily intake (adults) for vitamins and minerals according to Regulation (EU) No. 1169/2011.

German Multivitamin + Minerals

effervescent tablets



with
sweeteners/
sugar free

pomegranate
flavour

MADE IN
GERMANY

Ingredients

Acidifier citric acid, acidifier malic acid, calcium carbonate, magnesium carbonate, humectant sorbitol, acidity regulator sodium hydrogen carbonate, potassium hydrogen carbonate, starch, inulin, L-ascorbic acid (vitamin C), anti-caking agent tricalcium phosphate, sweetener aspartame, flavours, DL- α -tocopheryl acetate (vitamin E), nicotinamide (niacin), sweetener acesulfame K, calcium-D-pantothenate (pantothenic acid), red beet juice powder (maltodextrin, red beet juice powder), sweetener sucralose, riboflavin 5'-phosphate-sodium (vitamin B2), pyridoxine hydrochloride (vitamin B6), thiamine hydrochloride (vitamin B1), pteroylmonoglutamic acid (folic acid), D-biotin, cyanocobalamin (vitamin B12)

	per daily portion (1 effervescent tablet)	NRV* per daily portion
Magnesium	150 mg	40 %
Calcium	300 mg	38 %
Vitamin C	80 mg	100 %
Niacin (NE)	16 mg	100 %
Vitamin E (α -TE)	12 mg	100 %
Pantothenic acid	6.0 mg	100 %
Pyridoxine (vitamin B6)	1.4 mg	100 %
Riboflavin (Vitamin B2)	1.4 mg	100 %
Thiamine (vitamin B1)	1.1 mg	100 %
Biotin	50 μ g	100 %
Folic acid	200 μ g	100 %
Vitamin B12	2.5 μ g	100 %

* (Nutrient reference values); reference values for the daily intake (adults) for vitamins and minerals according to Regulation (EU) No. 1169/2011.



Packaging may vary

About German Multivitamin + Minerals

German Multivitamin + Minerals effervescent tablets contain vitamins and minerals for your daily vitality.

Manufacturer

T&D Pharma GmbH
Lemgoer Straße 16 • 32689 Kalletal, Germany
Fon +49(0) 5264 655 999 20 • Fax +49(0) 5264 655 999 30
info@td-pharma.de • www.td-pharma.de



Benefits

Magnesium contributes to

- normal muscle function
- normal energy-yielding metabolism and electrolyte balance
- the reduction of tiredness and fatigue
- the normal functioning of the nerves and normal psychological function
- contributes to the maintenance of normal bones and teeth

Calcium contributes to

- normal muscle function
- normal blood clotting
- normal energy-yielding metabolism

Vitamin C contributes to

- the normal function of the immune system
- maintain the normal function of the immune system during and after intense physical exercise
- the reduction of tiredness and fatigue

Niacin contributes to

- normal functioning of the nervous system
- the reduction of tiredness and fatigue
- the maintenance of normal skin and normal mucous membranes

Vitamin E contributes to

- the protection of cells from oxidative stress

Pantothenic acid contributes to

- the reduction of tiredness and fatigue
- normal mental performance

Vitamin B6 contributes to

- normal functioning of the nervous system
- normal psychological function

Vitamin B2 (riboflavin) and vitamin B6 contribute to

- the reduction of tiredness and fatigue

Vitamin B1 (thiamine) contributes to

- normal functioning of the nervous system
- normal energy-yielding metabolism
- the normal function of the heart



Folic acid contributes to

- normal blood formation
- the normal function of the immune system

Biotin contributes to

- the maintenance of normal hair and normal skin

Vitamin B12 contributes to

- normal functioning of the nervous system
- normal mental function
- normal red blood cell formation
- normal functioning of the immune system
- the reduction of tiredness and fatigue

Contents of the pack

20 effervescent tablets à 4.5 g = 90 g food supplement with vitamins and minerals

Recommended intake

Dissolve and drink one effervescent tablet daily in a glass of water (250 ml).

Important instructions

Food supplements are no substitute for a varied and balanced diet as well as a healthy lifestyle. Store out of sight and reach of young children in a cool (< 25 °C), dry and light-protected place.

The recommended daily intake indicated should not be exceeded.

Contains a source of phenylalanine.

Pregnancy and breastfeeding

During pregnancy and while breastfeeding it is generally recommended to consult with your doctor before using a food supplement.

German Multivitamins for children

effervescent tablets



with
sweeteners/
sugar free

raspberry
flavour

MADE IN
GERMANY

About German Multivitamins for children

German Multivitamins for children effervescent tablets contain vitamins for your child's daily vitality.

Benefits

Vitamin C contributes to

- the normal function of the immune system
- maintain the normal function of the immune system during and after intense physical exercise
- the reduction of tiredness and fatigue
- normal energy-yielding metabolism

Niacin contributes to

- normal functioning of the nervous system
- the reduction of tiredness and fatigue
- the maintenance of normal skin and normal mucous membranes

Vitamin E contributes to

- the protection of cells from oxidative stress

Vitamin B2 and vitamin B6 contribute to

- the reduction of tiredness and fatigue

Vitamin B6 contributes to

- normal functioning of the nervous system
- normal psychological function

Vitamin B1 (thiamine) contributes to

- normal functioning of the nervous system
- normal energy-yielding metabolism
- the normal function of the heart

Folic acid contributes to

- normal blood formation
- the normal function of the immune system

Vitamin B12 contributes to

- normal energy-yielding metabolism
- normal functioning of the nervous system
- normal mental function
- normal red blood cell formation
- normal functioning of the immune system
- the reduction of tiredness and fatigue



Packaging may vary

Contents of the pack

20 effervescent tablets à 4.5 g = 90 g
food supplement with vitamins

Manufacturer

T&D Pharma GmbH
Lemgoer Straße 16 • 32689 Kalletal, Germany
Fon +49(0)5264 655 999 20 • Fax +49(0)5264 655 999 30
info@td-pharma.de • www.td-pharma.de

German Multivitamins for children



Recommended intake

Daily and drink one effervescent tablet daily in a glass of water (250 ml).

Pregnancy and breastfeeding

During pregnancy and while breastfeeding it is generally recommended to consult with your doctor before using a food supplement.

Important instructions

Food supplements are no substitute for a varied and balanced diet as well as a healthy lifestyle. Store out of sight and reach of young children in a cool (< 25 °C), dry and light-protected place.

The recommended daily intake indicated should not be exceeded.

Contains a source of phenylalanine.

Ingredients

Acidifier citric acid, acidity regulator sodium hydrogen carbonate, humectant sorbitol, acidity regulator sodium carbonate, L-ascorbic acid (vitamin C), inulin, starch, anti-caking agent tricalcium phosphate, flavouring, maltodextrin, sweetener aspartame, red beet juice powder, DL- α -tocopheryl acetate (vitamin E), nicotinamide (niacin), sweetener acesulfame K, sweetener sucralose, riboflavin 5'-phosphate-sodium (vitamin B2), pyridoxine hydrochlorid (vitamin B6), thiamine hydrochloride (vitamin B1), pteroyl monoglutamic acid (folic acid), cyanocobalamin (vitamin B12).

	per daily portion (1 effervescent tablet)	NRV* per daily portion
Vitamin C	80 mg	100 %
Niacin (NE)	16 mg	100 %
Vitamin E (α -TE)	12 mg	100 %
Vitamin B6	1.4 mg	100 %
Riboflavin (Vitamin B2)	1.4 mg	100 %
Thiamine (vitamin B1)	1.1 mg	100 %
Folid acid	200 μ g	100 %
Vitamin B12	2.5 μ g	100 %

* (Nutrient reference values); reference values for the daily intake (adults) for vitamins and minerals according to Regulation (EU) No. 1169/2011.

German Vitamin ACE

effervescent tablets



with
sweeteners/
sugar free

peach
flavour

MADE IN
GERMANY

About German Vitamin ACE

German Vitamin ACE effervescent tablets contain vitamin A, vitamin C and vitamin E for your daily vitality.

Recommended intake

Dissolve and drink one effervescent tablet daily in a glass of water (250 ml).

Contents of the pack

20 effervescent tablets à 4.2 g = 84 g food supplement with vitamin A, vitamin C and vitamin E

Pregnancy and breastfeeding

During pregnancy and while breastfeeding it is generally recommended to consult with your doctor before using a food supplement.

Benefits

Vitamin A contributes to

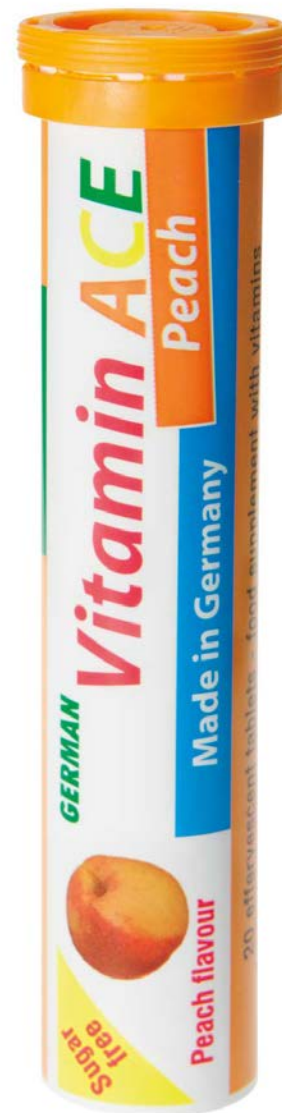
- normal iron metabolism
- the maintenance of normal mucous membranes, normal skin and normal vision

Vitamin C contributes to

- the normal function of the immune system
- maintain the normal function of the immune system during and after intense physical exercise
- the reduction of tiredness and fatigue
- normal energy-yielding metabolism

Vitamin E contributes to

- the protection of cells from oxidative stress



Packaging may vary

Manufacturer

T&D Pharma GmbH
Lemgoer Straße 16 • 32689 Kalletal, Germany
Fon +49(0)526465599920 • Fax +49(0)526465599930
info@td-pharma.de • www.td-pharma.de

German Vitamin ACE



Important instructions

Food supplements are no substitute for a varied and balanced diet as well as a healthy lifestyle. Store out of sight and reach of young children in a cool (< 25 °C), dry and light-protected place.

The recommended daily intake indicated should not be exceeded.

Contains a source of phenylalanine.

Ingredients

Acidifier citric acid, acidity regulator sodium hydrogen carbonate, humectant sorbitol, acidity regulator sodium carbonate, starch, L-ascorbic acid (vitamin C), anti-caking agent tricalcium phosphate, sweetener sodium cyclamate, flavor, red beet juice powder (maltodextrin; red beet juice powder), DL- α -tocopheryl acetate (vitamin E), sweetener sodium saccharin, colour riboflavin-5'-phosphate-sodium, retinyl acetate (vitamin A).

	per daily portion (1 effervescent tablet)	NRV* per daily portion
Vitamin A (RE)	800 μ g	100 %
Vitamin C	60 mg	75 %
Vitamin E (α -TE)	10 mg	83%

* (Nutrient reference values); reference values for the daily intake (adults) for vitamins and minerals according to Regulation (EU) No. 1169/2011.

German Vitamin C

effervescent tablets



with
sweeteners/
sugar free

lemon
flavour

MADE IN
GERMANY

About German Vitamin C

German Vitamin C effervescent tablets contain vitamin C for your daily vitality.

Recommended intake

Dissolve and drink one effervescent tablet daily in a glass of water (250 ml).

Contents of the pack

20 effervescent tablets à 4.0 g = 80 g food supplement with vitamin C

Pregnancy and breastfeeding

During pregnancy and while breastfeeding it is generally recommended to consult with your doctor before using a food supplement.

Benefits

Vitamin C contributes to

- the normal function of the immune system
- maintain the normal function of the immune system during and after intense physical exercise
- the reduction of tiredness and fatigue
- normal collagen formation for the normal function of skin, gums and teeth
- normal energy-yielding metabolism
- normal functioning of the nervous system

Vitamin C increases iron absorption.



Packaging may vary

Manufacturer

T&D Pharma GmbH
Lemgoer Straße 16 • 32689 Kalletal, Germany
Fon +49 (0) 5264 655 999 20 • Fax +49 (0) 5264 655 999 30
info@td-pharma.de • www.td-pharma.de

German Vitamin C



Important instructions

Food supplements are no substitute for a varied and balanced diet as well as a healthy lifestyle. Store out of sight and reach of young children in a cool (< 25 °C), dry and light-protected place.

The recommended daily intake indicated should not be exceeded.

Contains a source of phenylalanine.

Ingredients

Acidifier citric acid, acidity regulator sodium hydrogen carbonate, L-ascorbic acid (vitamin C), acidity regulator sodium carbonate, starch, humectant sorbitol, anti-caking agent tricalcium phosphate, inulin, sweetener aspartame, flavour, sweetener acesulfame K, sweetener sucralose, red beet juice powder (maltodextrin, red beet juice powder), colour riboflavin-5'-phosphate-sodium.

	per daily portion (1 effervescent tablet)	NRV* per daily portion
Vitamin C	180 mg	225 %

* (Nutrient reference values); reference values for the daily intake (adults) for vitamins and minerals according to Regulation (EU) No. 1169/2011.

German Zinc

effervescent tablets



with
sweeteners/
sugar free

peach-
passion fruit
flavour

MADE IN
GERMANY

About German Zinc

German Zinc effervescent tablets contain zinc for your daily vitality.

Recommended intake

Dissolve and drink one effervescent tablet daily in a glass of water (250 ml).

Contents of the pack

20 effervescent tablets à 4.5 g = 90 g food supplement with zinc.

Pregnancy and breastfeeding

During pregnancy and while breastfeeding it is generally recommended to consult with your doctor before using a food supplement.

Benefits

Zinc contributes to

- the maintenance of normal vision
- the normal function of the immune system
- the maintenance of normal bones, normal hair and normal nails
- normal cognitive function
- normal fertility and reproduction
- the maintenance of normal skin
- the maintenance of normal testosterone levels in the blood



Packaging may vary

Manufacturer

T&D Pharma GmbH
Lemgoer Straße 16 • 32689 Kalletal, Germany
Fon +49 (0) 5264 655 999 20 • Fax +49 (0) 5264 655 999 30
info@td-pharma.de • www.td-pharma.de



Important instructions

Food supplements are no substitute for a varied and balanced diet as well as a healthy lifestyle. Store out of sight and reach of young children in a cool (< 25 °C), dry and light-protected place.

The recommended daily intake indicated should not be exceeded.

Contains a source of phenylalanine.

The intake of other zinc-containing products should be avoided.

Ingredients

Acidifier citric acid, acidity regulator sodium hydrogen carbonate, humectant sorbitol, starch, acidity regulator sodium carbonate, inulin, anti-caking agent tricalcium phosphate, flavour, sweetener aspartame, zinc sulphate, red beet juice powder (maltodextrin, red beet juice powder), sweetener acesulfame K, sweetener sucralose, colour riboflavin-5'-phosphatesodium.

	per daily portion (1 effervescent tablet)	NRV* per daily portion
Zinc	5 mg	50 %

* (Nutrient reference values); reference values for the daily intake (adults) for vitamins and minerals according to Regulation (EU) No. 1169/2011.

Gluco AIWA[®] plus

effervescent tablets



with
sweeteners/
sugar free

lemon
flavour

MADE IN
GERMANY

About Gluco AIWA[®] plus

Gluco AIWA[®] plus effervescent tablets contain a special combination of glucosamine, chondroitin, vitamin C and copper. Easily soluble in water and with a pleasant taste, it is an alternative to the often used capsules containing these substances.

Recommended intake

Dissolve and drink one effervescent tablet daily in a glass of water (250 ml).

Pregnancy and breastfeeding

During pregnancy and while breastfeeding it is generally recommended to consult with your doctor before using a food supplement.

Benefits

Glucosamine is a so-called amino sugar, which occurs mainly in the shells of shellfish and crustaceans, such as shrimp, crab and lobster.

Chondroitin is the perfect addition to glucoamine. Chondroitin is one of the polysaccharides and is especially present in the cartilage tissue of cattle or fish. Therefore, the normal diet usually contains very little glucosamine and chondroitin.

Vitamin C contributes to

- normal collagen formation for the normal function of bones, blood vessels and cartilage
- the protection of cells from oxidative stress

Copper contributes to

- maintenance of normal connective tissue
- the protection of cells from oxidative stress
- the normal function of the immune system



Packaging may vary

Contents of the pack

19 effervescent tablets à 4,5 g = 85,5 g
food supplement with glucosamine hydrochloride,
chondroitin sulfate, vitamin C and copper

Manufacturer

T&D Pharma GmbH

Lemgoer Straße 16 • 32689 Kalletal, Germany
Fon +49(0) 5264 655 999 20 • Fax +49(0) 5264 655 999 30
info@td-pharma.de • www.td-pharma.de



Important instructions

Food supplements are no substitute for a varied and balanced diet as well as a healthy lifestyle. Store out of sight and reach of young children in a cool (< 25 °C), dry and light-protected place.

The recommended daily intake indicated should not be exceeded.

For consumers with impaired glucose tolerance, monitoring of the blood sugar levels and insulin requirements is recommended.

Consumers, who are treated with coumarin anticoagulants, should use the product only after consultation with the doctor. Blood coagulation should be carefully monitored.

Not suitable for children and adolescents.

Ingredients:

Acidifier citric acid, glucosamine hydrochloride (**from crustaceans**) (17.35 %), chondroitin sulfate (16.63 %), acidity regulator sodium hydrogen carbonate, acidity regulator sodium carbonate, inulin, L-ascorbic acid (vitamin C), flavours, humectant sorbitol, releasing agent polyvinyl pyrrolidone, sweetener aspartame, sweetener acesulfame K, copper gluconate, sweetener sucralose, colouring agent riboflavin-5'-phosphate-sodium.

	per daily portion (1 effervescent tablet)	NRV* per daily portion
Vitamin C	80 mg	100 %
Copper	1 mg	100 %
Glucosamine hydrochloride	750 mg	**
Chondroitin sulfate	600 mg	**

* (Nutrient reference values); reference values for the daily intake (adults) for vitamins and minerals according to Regulation (EU) No. 1169/2011.

** No reference value available.



with
sweeteners

elderberry
flavour

MADE IN
GERMANY



Packaging may vary

About iC Direct®

iC Direct® was developed as a food supplement especially for those who have an increased need for iron and vitamin C or through the diet are receiving an insufficient amount thereof. The modern administration form as micro-pellets in convenient sachets allow easy taking on the go and without water. The pellets are placed directly into the mouth and dissolve there quickly

Recommended intake

Once daily pour the contents of a sachet directly on the tongue, let it melt slowly and swallow.

Benefits

Iron contributes to

- a normal formation of red blood cells and hemoglobin
- reducing tiredness and fatigue
- a normal transport of oxygen in the body
- a normal function of the immune system
- a normal energy metabolism

Vitamin C contributes to

- increase iron absorption in the body
- the protection of cells from oxidative stress



Contents of the pack

20 sachets with micro-pellets
à 2.5 g = 50 g food supplement with iron and vitamin C

Pregnancy and breastfeeding

During pregnancy and while breastfeeding it is generally recommended to consult with your doctor before using a food supplement.

Manufacturer

T&D Pharma GmbH
Lemgoer Straße 16 • 32689 Kalletal, Germany
Fon +49(0)526465599920 • Fax +49(0)526465599930
info@td-pharma.de • www.td-pharma.de



Important instructions

During pregnancy and while breastfeeding it is generally recommended to consult with your doctor before taking a food supplement.

Contains a source of phenylalanine.

Ingredients

Bulking agent sorbitol; acerola juice powder (maltodextrin, acerola juice powder, L-ascorbic acid (vitamin C); red beet juice powder (maltodextrin, red beet juice powder); L-ascorbic acid (vitamin C); ferrous fumarate; vegetable fat (fully hydrogenated, source palm); thickener sodium carboxy methyl cellulose; flavouring; anti-caking agent magnesium salts of fatty acids; anti-caking agent silicon dioxide; sweetener aspartame; sweetener acesulfame K

	per daily portion (1 sachet)	NRV* per daily portion
Iron	14 mg	100 %
Vitamin C	80 mg	100 %

* (Nutrient reference values); reference values for the daily intake (adults) for vitamins and minerals according to Regulation (EU) No. 1169/2011.



orange
flavour

MADE IN
GERMANY



Packaging may vary

About iFol®

iFol® was developed as a food supplement especially for those who have an increased need for folic acid and iron or through the diet are receiving an insufficient amount thereof. Both nutrients are essential for humans and fulfill important tasks in the metabolism.

Contents of the pack

7 drinking ampoules à 7 ml = 49 ml food supplement with folic acid and iron

Benefits

Folid acid contributes to

- a normal hematopoiesis
- a normal mental function
- a normal function of the immune system
- reducing fatigue and tiredness

Iron contributes to

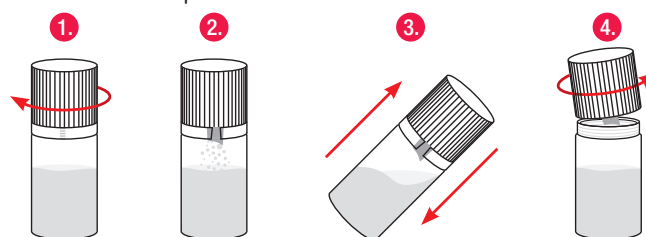
- a normal formation of red blood cells and hemoglobin
- a normal transport of oxygen in the body
- a normal cognitive function
- a normal energy metabolism
- a normal function of the immune system
- reducing tiredness and fatigue



Recommended intake

The ingredients are mixed immediately before consumption in the ampoule. The cap contains the folic acid- and iron-powder and the liquid is contained in the ampoule.

1. Close the cap clockwise (see arrows on the cap) until the white safety ring loosens.
2. The folic acid- and iron-powder falls into the liquid.
3. Shake the ampoule well
4. Twist off the cap counterclockwise (to the left) and drink the liquid



Pregnancy and breastfeeding

During pregnancy and while breastfeeding it is generally recommended to consult with your doctor before using a food supplement.

Manufacturer

T&D Pharma GmbH

Lemgoer Straße 16 • 32689 Kalletal, Germany
Fon +49(0)526465599920 • Fax +49(0)526465599930
info@td-pharma.de • www.td-pharma.de



Important instructions

Food supplements are no substitute for a varied and balanced diet as well as a healthy lifestyle. Store out of sight and reach of young children in a cool (< 25 °C), dry and light-protected place.

The recommended daily intake indicated should not be exceeded.

Ingredients

Water, fructose, filler mannitol, iron diphosphate, flavouring, acidifier citric acid, food colouring safflower concentrate, preservative potassium sorbate, releasing agent silicon dioxide, magnesium salts of fatty acids, pteroylmonoglutamic acid (folic acid).

	per daily portion (= 1 drinking ampoule)	NRV* per daily portion
Folid acid	400 µg	200 %
Iron	14.0 mg	100 %

* Nutrient reference values; daily reference intakes for vitamins and minerals (adults) according to Regulation (EU) No. 1169/2011.

Ferro AIWA[®] plus

Power from Nature



gluten
free

MADE IN
GERMANY

About Ferro AIWA[®] plus

Ferro AIWA[®] plus soft capsules makes a valuable contribution to the supply of vitamins and minerals, especially if an appropriate and adequate intake is not guaranteed through the normal diet. Ferro AIWA[®] plus is particularly recommended for women of childbearing age as well as for pregnant women, elderly people and athletes.

Recommended intake

Take 1 soft capsule daily unchewed with liquid to a meal.

Contents of the pack

30 soft capsules à 670 mg = 20.1 g
food supplement with iron, other minerals and vitamins

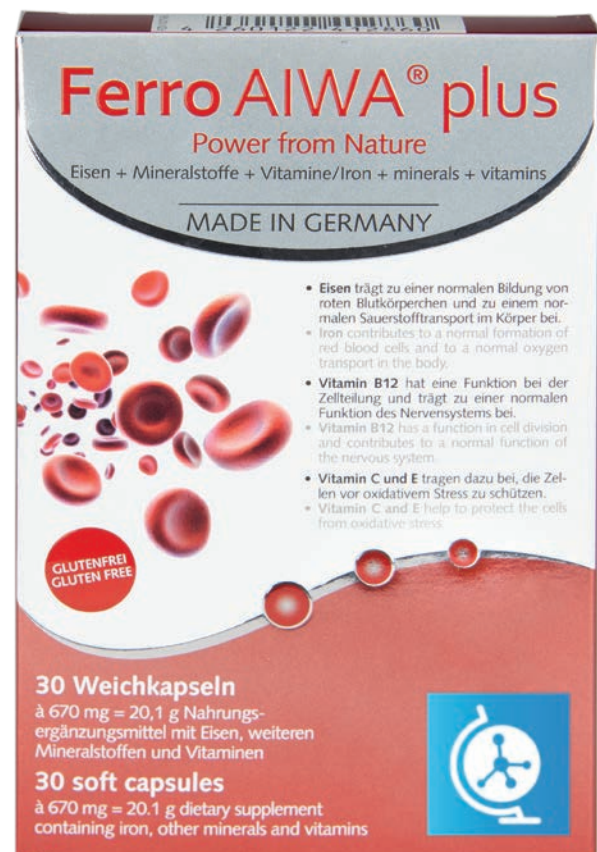
Pregnancy and breastfeeding

During pregnancy and while breastfeeding it is generally recommended to consult with your doctor before using a food supplement.

Benefits

Iron contributes to

- normal cognitive function
- normal energy-yielding metabolism
- the normal formation of red blood cells and haemoglobin
- normal oxygen transport in the body
- the normal function of the immune system
- the reduction of tiredness and fatigue



Packaging may vary

Manufacturer

T&D Pharma GmbH

Lemgoer Straße 16 • 32689 Kalletal, Germany
Fon +49(0)526465599920 • Fax +49(0)526465599930
info@td-pharma.de • www.td-pharma.de



Important instructions

Food supplements are no substitute for a varied and balanced diet as well as a healthy lifestyle. Store out of sight and reach of young children in a cool (< 25 °C), dry and light-protected place.

The recommended daily intake indicated should not be exceeded.

For adolescents and adults. Iron-based food supplements should only be used if the iron supply is insufficient.

Ingredients

Soybean oil; ascorbic acid (vitamin C); gelatin (beef); soybean oil (partially hardened); moisturizing agent glycerin; iron (II) fumarate; soybean oil (completely hardened); D- α -tocopherol (vitamin E); zinc oxide; water, purified; emulsifier lecithin (soy); pyridoxine hydrochloride (vitamin B6); copper (II) sulfate, anhydrous; cyanocobalamin (vitamin B12); folic acid; colouring agent iron oxide, red

	per daily portion (= 1 soft capsule)	% NRV* per daily portion
Iron	14 mg	100 %
Zinc	15 mg	150 %
Copper	2 mg	200 %
Folid acid	600 μ g	300 %
Vitamin B12	9 μ g	360 %
Vitamin B6	5.4 mg	386 %
Vitamin C	100 mg	125 %
Vitamin E (α -TE)	12 mg	100 %

* (Nutrient reference values); reference values for the daily intake (adults) for vitamins and minerals according to Regulation (EU) No. 1169/2011.

Magnesium AIWA®

375 mg



gluten-
and lactose
free

with
sweeteners

orange
flavour

MADE IN
GERMANY



Packaging may vary

About Magnesium AIWA®

Magnesium AIWA® is the ideal food supplement when it comes to quickly and easily improving your magnesium intake. The modern dosage form as micro pellets in a practical stick pack makes this possible without any water. The pellets are placed directly in the mouth and quickly dissolve there.

Contents of the pack

20 sachets with micro-pellets
à 2.0 g = 40 g food supplement

Recommended intake

1x daily pour the content of 1 sachet directly on the tongue, let it melt slowly and swallow.

Pregnancy and breastfeeding

During pregnancy and while breastfeeding it is generally recommended to consult with your doctor before using a food supplement.

Benefits

Magnesium contributes to

- normal muscle function
- normal energy-yielding metabolism and electrolyte balance
- the reduction of tiredness and fatigue
- the normal functioning of the nerves and normal psychological function
- the maintenance of normal bones and teeth



Manufacturer

T&D Pharma GmbH
Lemgoer Straße 16 • 32689 Kalletal, Germany
Fon +49(0)526465599920 • Fax +49(0)526465599930
info@td-pharma.de • www.td-pharma.de

Magnesium AIWA[®]

375 mg



Important instructions

Food supplements are no substitute for a varied and balanced diet as well as a healthy lifestyle. Store out of sight and reach of young children in a cool (< 25 °C), dry and light-protected place.

The recommended daily intake indicated should not be exceeded.

Please consult your doctor if you suffer from renal impairment or when pregnant. Can have a laxative effect on sensitive persons.

Contains a source of phenylalanine.

Ingredients

Sorbitol, magnesium oxide, acidifying agent citric acid, thickener carboxymethyl cellulose, flavour, anti-caking agent magnesium salts of fatty acids, sweetener aspartame

	per daily portion (1 sachet)	NRV* per daily portion
Magnesium	375 mg	100 %

* (Nutrient reference values); reference values for the daily intake (adults) for vitamins and minerals according to Regulation (EU) No. 1169/2011.

Neo AIWA®

capsules



FOOD SUPPLEMENT

MADE IN GERMANY

Benefits

Thiamine contributes to

- normal energy-yielding metabolism
- normal functioning of the nervous system

Riboflavin contributes to the

- maintenance of normal red blood cells
- maintenance of normal skin and normal vision

Pyridoxine (vitamin B6) contributes to

- normal homocysteine metabolism
- normal psychological function
- the reduction of tiredness and fatigue

Vitamin B12 contributes to

- normal red blood cell formation
- normal functioning of the nervous system
- the reduction of tiredness and fatigue

Niacin contributes to

- normal energy-yielding metabolism
- normal functioning of the nervous system

Folic acid contributes to

- maternal tissue growth during pregnancy

Biotin contributes to

- normal macronutrient metabolism
- the maintenance of normal skin

Pantothenic acid contributes to

- normal mental performance
- normal energy-yielding metabolism

Vitamin C contributes to the

- normal function of the immune system
 - protection of cells from oxidative stress
- Vitamin C increases iron absorption.

Vitamin E contributes to the

- protection of cells from oxidative stress

Iodine contributes to

- the normal production of thyroid hormones and normal thyroid function
- normal functioning of the nervous system



Packaging may vary

About Neo AIWA®

Neo AIWA® capsules with vegetarian capsule shell provides active support with the supplement of many vitamins and iodine. Especially designed for pregnancy and whilst breastfeeding.

Contents of the pack

32 capsules with vegetarian capsule shell
à 502 mg = 16.1 g
food supplement with vitamins and iodine

Manufacturer

T&D Pharma GmbH
Lemgoer Straße 16 • 32689 Kalletal, Germany
Fon +49(0) 5264 655 999 20 • Fax +49(0) 5264 655 999 30
info@td-pharma.de • www.td-pharma.de

FOOD SUPPLEMENT



Recommended intake

Swallow one capsule daily with plenty of liquid.

Important instructions

Food supplements are no substitute for a varied and balanced diet as well as a healthy lifestyle. Store out of sight and reach of young children in a cool (< 25 °C), dry and light-protected place.

The recommended daily intake indicated should not be exceeded.

Ingredients

Bulking agent calcium phosphate, L-ascorbic acid (vitamin C), bulking agent hydroxypropyl methyl cellulose, DL- α -tocopheryl acetate (vitamin E), nicotinamide (niacin), calcium-d-pantothenate (pantothenic acid), anticaking agent silicon dioxide, anti-caking agent magnesium salts of fatty acids, pyridoxine hydrochloride (vitamin B6), thiamine hydrochloride (vitamin B1), riboflavin (vitamin B2), thickener carrageenan, colour titanium dioxide, acidity regulator potassium acetate, pteroylmonoglutamic acid (folic acid), potassium iodide, D-biotin, colour erythrosine, colour brilliant blue FCF and iron oxide, cyanocobalamin (vitamin B12).

	per daily portion (1 capsule)	NRV* per daily portion
Folic acid	400 μ g	200 %
Thiamine (vitamin B1)	1.5 mg	136 %
Riboflavin (vitamin B2)	1.8 mg	129 %
Vitamin B6	2.6 mg	186 %
Vitamin B12	3.5 μ g	140 %
Biotin	150 μ g	300 %
Niacin NE	16.0 mg	113 %
Pantothenic acid	6.0 mg	100 %
Vitamin E α -TE	14.0 mg	117 %
Vitamin C	110 mg	138 %
Iodine	200 μ g	133 %

* (Nutrient reference values); reference values for the daily intake (adults) for vitamins and minerals according to Regulation (EU) No. 1169/2011.

Neo AIWA[®] plus Fe⁺⁺

capsules



MADE IN
GERMANY



Packaging may vary

About Neo AIWA[®] plus Fe⁺⁺

Neo AIWA[®] plus Fe⁺⁺ capsules with hypromellose capsule shell provides active support with the supplement of many vitamins and iron. Especially designed for pregnancy and whilst breastfeeding.

Recommended intake

Swallow one capsule daily with plenty of liquid.

Contents of the pack

32 capsules à 522 mg = 16.7 g
food supplement with vitamins and iron

Important instructions

Food supplements are no substitute for a varied and balanced diet as well as a healthy lifestyle. Store out of sight and reach of young children in a cool (< 25 °C), dry and light-protected place.

The recommended daily intake indicated should not be exceeded.

Ferruginous food supplements should only be used if there is an inadequate iron supply.

Manufacturer

T&D Pharma GmbH
Lemgoer Straße 16 • 32689 Kalletal, Germany
Fon +49(0)5264 655 999 20 • Fax +49(0)5264 655 999 30
info@td-pharma.de • www.td-pharma.de



Benefits

Iron contributes to

- normal formation of red blood cells and haemoglobin
- the reduction of tiredness and fatigue

Thiamine contributes to

- normal energy-yielding metabolism
- normal functioning of the nervous system

Riboflavin contributes to the

- maintenance of normal red blood cells
- maintenance of normal skin and normal vision

Pyridoxine (vitamin B6) contributes to

- normal homocysteine metabolism
- normal psychological function
- the reduction of tiredness and fatigue

Vitamin B12 contributes to

- normal red blood cell formation
- normal functioning of the nervous system
- the reduction of tiredness and fatigue

Niacin contributes to

- normal energy-yielding metabolism
- normal functioning of the nervous system

Folic acid contributes to

- maternal tissue growth during pregnancy

Biotin contributes to

- normal macronutrient metabolism
- the maintenance of normal skin

Pantothenic acid contributes to

- normal mental performance
- normal energy-yielding metabolism

Vitamin C contributes to the

- normal function of the immune system
 - protection of cells from oxidative stress
- Vitamin C increases iron absorption.

Vitamin E contributes to

- the protection of cells from oxidative stress



Iodine contributes to

- the normal production of thyroid hormones and normal thyroid function
- normal functioning of the nervous system

Ingredients

Bulking agent calcium phosphate, L-ascorbic acid (vitamin C), bulking agent hydroxypropyl methyl cellulose, ferrous fumarate, DL- α -tocopheryl acetate (Vitamin E), nicotinamide (niacin), calcium-D-pantothenate (pantothenic acid), anti-caking agent silicon dioxide, anti-caking agent magnesium salts of fatty acids, pyridoxine hydrochloride (vitamin B6), colour titanium dioxide, thiamin hydrochloride (vitamin B1), thickener carrageenan, riboflavin (vitamin B2), acidity regulator potassium acetate, pteroylmonoglutamic acid (folic acid), potassium iodide, Biotin, colour brilliant blue FCF, cyanocobalamin (vitamin B12).

	per capsule (0.522 g)	NRV* per capsule
Biotin	150 μ g	300 %
Folid acid	400 μ g	200 %
Vitamin B6	2.6 mg	186 %
Vitamin B12	3.5 μ g	140 %
Vitamin C	110 mg	138 %
Vitamin B1	1.5 mg	136 %
Iodine	200 μ g	133 %
Vitamin B2	1.8 mg	129 %
Vitamin E (α -TE)	14 mg	117 %
Niacin (NE)	16 mg	100 %
Iron	14 mg	100 %
Pantothenic acid	6 mg	100 %

* (Nutrient reference values); reference values for the daily intake (adults) for vitamins and minerals according to Regulation (EU) No. 1169/2011.

Osteo AIWA[®] forte + Vitamin D3

effervescent tablets



with
sweeteners/
sugar free

orange
flavour

MADE IN
GERMANY

About Osteo AIWA[®] forte + Vitamin D3

Osteo AIWA[®] forte + Vitamin D3 effervescent tablets with vitamin D3 and calcium, which both contribute to the maintenance of normal bones and to normal muscle function.

Recommended intake

Dissolve and drink one effervescent tablet daily in a glass of water (250 ml). Due to the fact that calcium is able to inhibit the absorption of several substances, Osteo AIWA[®] forte + Vitamin D3 should be taken at sufficient time intervals (approximately 3 hours after or 6 hours before taking any medication).

Pregnancy and breastfeeding

During pregnancy and while breastfeeding it is generally recommended to consult with your doctor before using a food supplement.

Benefits

Calcium contributes to

- normal blood clotting
- normal energy-yielding metabolism
- normal muscle function
- normal neurotransmission between the nerve cells
- the maintenance of normal bones and teeth

Vitamin D contributes to

- normal absorption and utilization of calcium and phosphorus
- normal calcium level in the blood
- the maintenance of the normal muscle function
- the maintenance of normal bones

Vitamin K contributes to

- normal blood clotting
- the maintenance of normal bones



Packaging may vary

Contents of the pack

20 effervescent tablets,
per tablet 12 g = 240 g food supplement
with calcium, vitamin D3 and vitamin K1

Manufacturer

T&D Pharma GmbH
Lemgoer Straße 16 • 32689 Kalletal, Germany
Fon +49(0)526465599920 • Fax +49(0)526465599930
info@td-pharma.de • www.td-pharma.de



Important instructions

Food supplements are no substitute for a varied and balanced diet as well as a healthy lifestyle. Store out of sight and reach of young children in a cool (< 25 °C), dry and light-protected place.

The recommended daily intake indicated should not be exceeded.

Contains a source of phenylalanine.

The intake of calcium may cause flatulence, diarrhoea, nausea, congestion or stomach aches.

In case of plasmocytomas, granulomatous diseases, electrolyte imbalance, kidney stones or impaired kidney function Osteo AIWA[®] forte + Vitamin D3 must not be taken. If taking medicinal products at the same time, a physician should be consulted. People taking anticoagulant (coumarin-type) medicinal products should consult their physician before consuming vitamin K-containing supplements.

Ingredients

Acidifier citric acid, calcium carbonate, acidity regulator sodium hydrogen carbonate, inulin, humectant sorbitol, acidity regulator sodium carbonate, starch, anti-caking agent tricalcium phosphate, flavouring, sweetener aspartame, sweetener acesulfame K, maltodextrin, red beet juice powder, colouring agent riboflavin 5-phosphate-sodium, vitamin K1, vitamin D3.

	per tablet (12 g)	in 100 g	NRV* per tablet
Calcium	1000 mg	8333 mg	125 %
Vitamin D3	5.0 µg	41.7 µg	100 %
Vitamin K1	80 µg	667 µg	107 %

* (Nutrient reference values); reference values for the daily intake (adults) for vitamins and minerals according to Regulation (EU) No. 1169/2011.

OXI-C[®] 1000 mg Immun plus effervescent tablets



high dose

with
sweeteners/
sugar free

orange
flavour

MADE IN
GERMANY

About OXI-C[®] 1000 mg Immun plus

OXI-C[®] 1000 mg Immun plus effervescent tablets contain 1000 mg vitamin C per effervescent tablet and sweeteners.

Recommended intake

Dissolve and drink one effervescent tablet daily in a glass of water (250 ml).

Contents of the pack

20 effervescent tablets à 4.5 g = 90 g food supplement with vitamin C.

Pregnancy and breastfeeding

During pregnancy and while breastfeeding it is generally recommended to consult with your doctor before using a food supplement.

Benefits

Vitamin C contributes to

- normal functioning of the immune system
- maintain the normal function of the immune system during and after intense physical exercise
- the reduction of tiredness and fatigue
- normal energy-yielding metabolism
- the protection of cells from oxidative stress
- normal collagen formation for the normal function of skin, gums and teeth

Vitamin C increases iron absorption.



Packaging may vary

Manufacturer

T&D Pharma GmbH

Lemgoer Straße 16 • 32689 Kalletal, Germany
Fon +49(0)5264 655 999 20 • Fax +49(0)5264 655 999 30
info@td-pharma.de • www.td-pharma.de

OXI-C[®] 1000 mg Immun plus



Important instructions

Food supplements are no substitute for a varied, balanced diet and a healthy lifestyle. Store in a cool (< 25 °C), dry and light-protected place, out of the sight and reach of young children.

The recommended daily intake indicated should not be exceeded.

Contains a source of phenylalanine.

Ingredients

Acidifier citric acid, L-ascorbic acid (vitamin C), acidity regulator sodium hydrogen carbonate, humectant sorbitol, acidity regulator sodium carbonate, inulin, starch, flavour, anti-caking agent tricalcium phosphate, sweetener aspartame, maltodextrin, sweetener acesulfame K, red beet juice powder, sweetener sucralose, colour riboflavin-5'-phosphate-sodium.

	per daily portion (1 effervescent tablet)	NRV* per daily portion
Vitamin C	1000 mg	1250 %

* (Nutrient reference values); reference values for the daily intake (adults) for vitamins and minerals according to Regulation (EU) No. 1169/2011.

Q10 AIWA[®] plus

Power from Nature

soft capsules



MADE IN GERMANY

Benefits

Coenzyme Q10, also called ubiquinone, belongs to the group of vitaminoids. These are vitamin-like compounds, which humans can also form themselves. In the diet, coenzyme Q10 is found predominantly in food of animal origin, e.g. in salmon, tuna and liver. Vegetable foods, on the other hand, contain the substance, with the exception of soy and rapeseed oil, only in very small quantities.

Zinc contributes to

- normal cognitive function
- the normal function of the immune system
- the maintenance of normal skin, normal hair and normal nails
- the maintenance of normal testosterone levels in the blood

Vitamin C contributes to

- maintain the normal function of the immune system during and after intense physical exercise
- normal collagen formation for the normal function of gums and teeth
- normal psychological function

Folic acid contributes to

- normal homocysteine metabolism
- the reduction of tiredness and fatigue

Vitamin E contributes to

- the protection of cells from oxidative stress



Packaging may vary

About Q10 AIWA[®] plus

Vitamins and minerals are indispensable for maintaining healthy life functions. Therefore, they must be taken regularly in sufficient quantities. In the hustle and bustle of everyday life, this is not always possible. Here Q10 AIWA[®] plus can make a valuable contribution as food supplement, especially if sufficient intake with the normal diet is not guaranteed. By the way: Also, sufficient exercise and a healthy lifestyle are important for your long-term well-being.

Recommended intake

Take 1 soft capsule daily unchewed with plenty of liquid.

Contents of the pack

30 soft capsules
à 479 mg = 14.4 g food supplement
with coenzyme Q10, vitamins and zinc

Manufacturer

T&D Pharma GmbH
Lemgoer Straße 16 • 32689 Kalletal, Germany
Fon +49(0)526465599920 • Fax +49(0)526465599930
info@td-pharma.de • www.td-pharma.de

Q10 AIWA[®] plus



Ingredients

L-ascorbic acid (vitamin C), soybean oil, gelatin (beef), moisturizing agent glycerin, soybean oil (partially hardened), coenzyme Q10 (6.3 %), DL-alpha-tocopheryl acetate (vitamin E), zinc oxide; soybean oil (completely hardened), emulsifier lecithin (**soy**), colour titanium dioxide, water purified, pteroylmonoglutamic acid (folic acid), colour Patentblue.

Pregnancy and breastfeeding

During pregnancy and while breastfeeding it is generally recommended to consult with your doctor before using a food supplement.

Important instructions

Food supplements are no substitute for a varied and balanced diet as well as a healthy lifestyle. Store out of sight and reach of young children in a cool (< 25 °C), dry and light-protected place.

The recommended daily intake indicated should not be exceeded.

Vitamin B-Complex AIWA®

capsules with prolonged release



with
vegetarian
capsule
shell

MADE IN
GERMANY

About Vitamin B-Complex AIWA®

Vitamin B-Complex AIWA® capsules with prolonged release and vegetarian capsule shell combines vitamins of the B-Complex as food supplement.

Benefits

Vitamin B1 (thiamine) contributes to

- normal functioning of the nervous system and to normal psychological function
- the normal function of the heart

Vitamin B2 (riboflavin) contributes to the maintenance

- of normal red blood cells
- of normal skin and normal vision

Vitamin B6 (pyridoxine) contributes to

- normal functioning of the nervous system
- the reduction of tiredness and fatigue
- the regulation of hormonal activity

Vitamin B12 contributes to

- normal psychological function
- the reduction of tiredness and fatigue
- normal red blood cell formation

Niacin contributes to

- normal energy-yielding metabolism
- the maintenance of normal skin and normal mucous membranes
- normal functioning of the nervous system

Folic acid contributes to

- normal blood formation
- normal psychological function
- the reduction of tiredness and fatigue

Biotin contributes to

- normal macronutrient metabolism
- the maintenance of normal skin, normal hair and normal mucous membranes

Pantothenic acid contributes to

- normal mental function
- normal energy-yielding metabolism



Packaging may vary

Recommended intake

Swallow one capsule daily with water.

Contents of the pack

32 capsules
with prolonged release and vegetarian capsule shell
à 552 mg = 17.7 g food supplement

60 capsules
with prolonged release and vegetarian capsule shell
à 552 mg = 33.12 g food supplement

Manufacturer

T&D Pharma GmbH
Lemgoer Straße 16 • 32689 Kalletal, Germany
Fon +49(0)526465599920 • Fax +49(0)526465599930
info@td-pharma.de • www.td-pharma.de

Vitamin B-Complex AIWA®



Pregnancy and breastfeeding

During pregnancy and while breastfeeding it is generally recommended to consult with your doctor before using a food supplement.

Important instructions

Food supplements are no substitute for a varied and balanced diet as well as a healthy lifestyle. Store out of sight and reach of young children in a cool (< 25 °C), dry and light-protected place.

The recommended daily intake indicated should not be exceeded.

Ingredients

Sugar; glazing agent hydroxypropyl methyl cellulose; nicotinamide (niacin); maltodextrin; starch; calcium-D-pantothenate (pantothenic acid); coating agent shellac; pyridoxine hydrochloride (vitamin B6); riboflavin (vitamin B2); thiamine mononitrate (vitamin B1); form release agents silicon dioxide and talc; thickening agent carrageenan; glucose syrup; acidity regulator potassium acetate; vegetable fat (origin: coconut oil); colouring agents titanium dioxide and iron oxide; pteroylmonoglutamic acid (folic acid); sodium chloride; D-biotin; cyanocobalamin (vitamin B12).

	per daily portion (= 1 capsule)	NRV* per daily portion
Vitamin B1	3.3 mg	300 %
Vitamin B2	4.2 mg	300 %
Vitamin B6	4.2 mg	300 %
Vitamin B12	7.5 µg	300 %
Niacin (NE)	48 mg	300 %
Pantothenic acid	18.0 mg	300 %
Biotin	150 µg	300 %
Folid acid	600 µg	300 %

* (Nutrient reference values); reference values for the daily intake (adults) for vitamins and minerals according to Regulation (EU) No. 1169/2011.

Vitamin C + Zink AIWA®

capsules with prolonged release



with
vegetarian
capsule
shell

MADE IN
GERMANY

About Vitamin C + Zink AIWA®

Vitamin C + Zink AIWA® capsules with prolonged release and vegetarian capsule shell combines vitamin C and the trace element zinc – a valuable combination for a strong health.

Recommended intake

Take one capsule daily with liquid.

Contents of the pack

32 capsules
with prolonged release and vegetarian capsule shell
à 0.632 g = 20.22 g
food supplement with vitamin C and zinc

Pregnancy and breastfeeding

During pregnancy and while breastfeeding it is generally recommended to consult with your doctor before using a food supplement.

Benefits

Vitamin C contributes to

- the normal function of the immune system
- the protection of cells from oxidative stress
- the reduction of tiredness and fatigue
- normal energy-yielding metabolism
- normal collagen formation for the normal function of gums

Zinc contributes to

- the normal function of the immune system
- the protection of cells from oxidative stress
- the maintenance of normal skin, normal hair, normal nails and normal vision

Zinc has a role in the process of cell division.



Packaging may vary

Manufacturer

T&D Pharma GmbH
Lemgoer Straße 16 • 32689 Kalletal, Germany
Fon +49 (0) 5264 655 999 20 • Fax +49 (0) 5264 655 999 30
info@td-pharma.de • www.td-pharma.de

Vitamin C + Zink AIWA®



Important instructions

Food supplements are no substitute for a varied and balanced diet as well as a healthy lifestyle. Store out of sight and reach of young children in a cool (< 25 °C), dry and light-protected place.

The recommended daily intake indicated should not be exceeded.

The intake of other zinc-containing supplements should be avoided.

Ingredients

Vitamin C, sugar, glazing agent hydroxypropyl methyl cellulose, gloating agent shellac, starch, zinc sulphate monohydrate, glucose syrup, coconut oil, thickener carageenan, acidity regulator potassium acetate, anti-caking agent talc, colour titanium dioxide, colour iron oxide

	per daily portion (1 scapsule)	NRV* per daily portion
Vitamin C	300 mg	375 %
Zinc	5 mg	50 %

* (Nutrient reference values); reference values for the daily intake (adults) for vitamins and minerals according to Regulation (EU) No. 1169/2011.